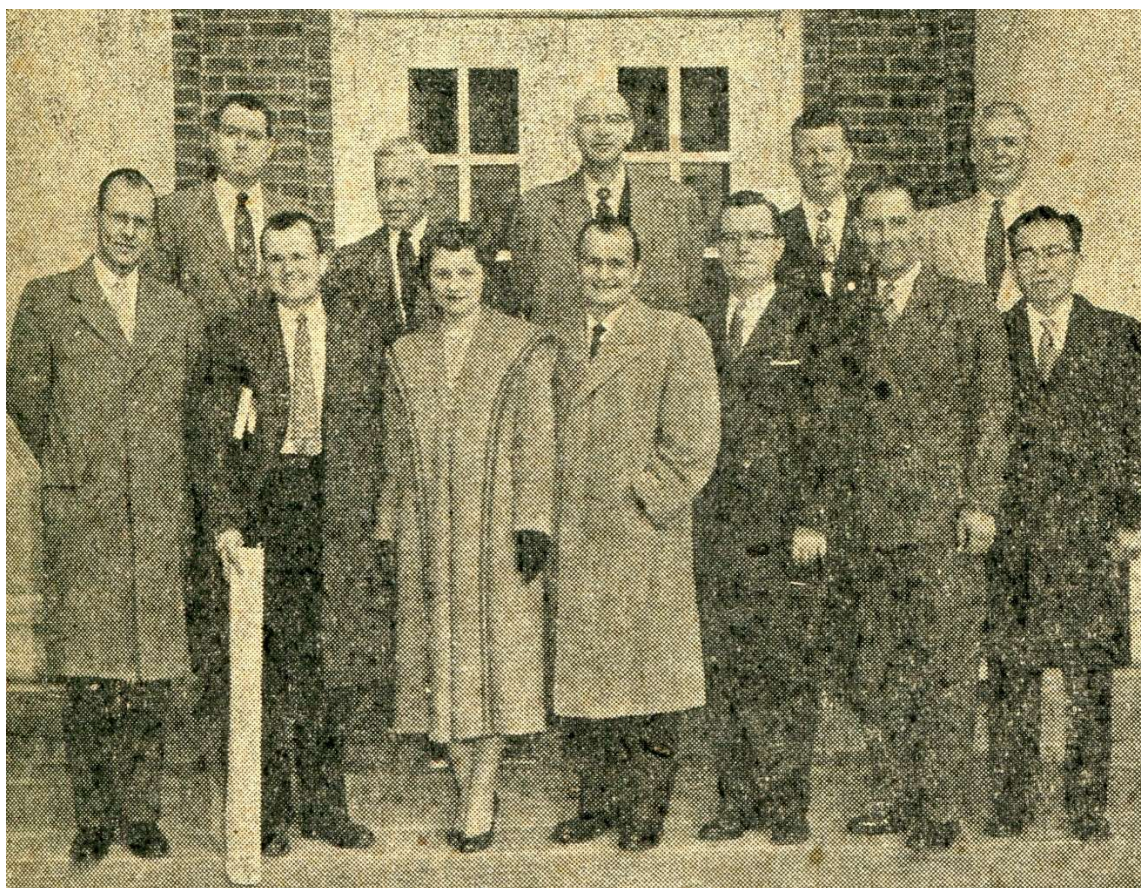


**Inventory to the  
J. J. Burt New Zealand  
All-Age Sunday School Collection**

**AR 164**



Rev. J. J. Burt (front row, second from right) with Duke McCall (front row, third from right) and other Baptist leaders, at William Jewell College, Missouri, 1955.

**Southern Baptist Historical Library and Archives**

**October, 2019**

# **Inventory to the J. J. Burt New Zealand All-Age Sunday School Collection**

## **AR 164**

### **Summary**

Main Entry: J. J. Burt New Zealand All-Age Sunday School Collection

Date Span: 1956 – 1967

Abstract: Collection of correspondence, publications, and reports related to forming an all-age Sunday school program for the Baptist Union of New Zealand. Collection primarily includes extensive incoming and outgoing correspondence between J. J. Burt, director of the Department of Christian Education, Baptist Union of New Zealand, and W. L. Howse, director of the Christian Education Division of the Sunday School Board, Southern Baptist Convention, from 1958-1964. Howse visited New Zealand in 1958 to help establish the all-age Sunday school program.

Size: .5 linear ft. (1 document box)

Collection #: AR 164

### **Historical Sketch**

The concept of all-age Sunday schools, which included Bible study curriculum for adults as well as for children, was first introduced in New Zealand after the Second World War by the Rev. Foster Sherburd, a young pastor in Berhampore. Eager to minister to U.S. servicemen, particularly a large number of Marines, who had arrived in Wellington after Pearl Harbor, Sherburd became interested in the types of church activities the servicemen had experienced in America. After the war he made several visits to the United States and learned of the Southern Baptist Convention's all-age Sunday School program. Sherburd pioneered the concept in Papatoetoe, New Zealand. Rev. J. J. Burt, who began service as the Baptist Union of New Zealand's first director of Christian education in 1955, expanded the program across the country in the 1960s.

Burt, too, visited America to learn more about Southern Baptist Convention's the all-age Sunday schools. In 1958, Dr. W. L. Howse, director of the education division of the SBC Sunday School Board, visited New Zealand for 18 days to assist Burt and others in implementing the program across the country. The Board provided free lesson materials to New Zealand Baptist churches. In 1960, Miss Anderine Farmer, first female student at Midwestern Baptist Theological Seminary and the Seminary's first student to serve on the foreign field, began work at the First Baptist Church of Palmerston North, New Zealand, a pilot church for the all-age Sunday schools. The Union dedicated significant efforts to promote the program in the early 1960s, and by 1963

about half of the Baptist churches in New Zealand had instituted all-age Sunday schools. In 1967 Burt was called to a church at Greendale and left the Baptist Union of New Zealand.

### **Scope and Content Note**

The J. J. Burt New Zealand All-Age Sunday School Collection (32 folders, 1 document box) documents the efforts to implement an all-age Sunday school program in New Zealand Baptist churches. The collection primarily includes extensive incoming and outgoing correspondence between Burt and W. L. Howse of the Sunday School Board, Southern Baptist Convention. The majority of the correspondence cover the years 1958-1964 and contain discussions on the visit and outcomes of Howse's visit to New Zealand in 1958. Correspondence from Clifton J. Allen and James Sullivan of the Sunday School Board are also included. Reports included in the collection from the 1960s chronicle the development, achievements, and outcomes of all-age Sunday schools in New Zealand. The collection also includes proposals and guides for developing all-age Sunday schools, and pamphlets and record and report cards related to the programs.

### **Arrangement**

The collection is arranged in alphabetical order. Correspondence are arranged in chronological order.

### **Provenance**

Donated by W. L. Howse to the Dargan Library in 1967 and then transferred to the Southern Baptist Historical Library and Archives in 1985.

### **Preferred Citation**

J. J. Burt New Zealand All-Age Sunday School Collection, Southern Baptist Historical Library and Archives, Nashville, Tennessee.

### **Access Restrictions**

None

### **Subject Terms**

Burt, James J.  
 Howse, William Lewis, Jr., 1905-1977  
 North, Lawrence  
 Baptists – New Zealand.  
 Southern Baptist Convention. Sunday School Board.  
 Sunday schools – growth.  
 Sunday schools – organization.  
 Sunday schools – New Zealand.

### **Related Materials**

Clifton Judson Allen Papers, Southern Baptist Historical Library and Archives, Nashville, Tennessee.

Sunday School Board. Executive Office Records. James Lenox Sullivan Papers, Southern

Baptist Historical Library and Archives, Nashville, Tennessee.

*New Zealand Baptist*. Periodical.

### Container List

#### Box 1

- 1.1 Achievement and Challenge: Report of a Survey of All-Age Sunday Schools (Prepared by the Department of Christian Education, Baptist Union of New Zealand), 1964
- 1.2 Burt, J. J., "The Development of a Philosophy of Christian Education," 1957
- 1.3 Correspondence – Allen, Clifton J., 1957
- 1.4 Correspondence – J. J. Burt / Fellow Workers and All Ministers, 1958-1962
- 1.5 Correspondence – J. J. Burt / James H. Daniel, 1964-1966
- 1.6 Correspondence – J. J. Burt / W. L. Howse, November, 1956
- 1.7 Correspondence – J. J. Burt / W. L. Howse, March-December, 1958
- 1.8 Correspondence – J. J. Burt / W. L. Howse, January-December, 1959
- 1.9 Correspondence – J. J. Burt / W. L. Howse, March-December, 1960
- 1.10 Correspondence – J. J. Burt / W. L. Howse, January-December, 1961
- 1.11 Correspondence – J. J. Burt / W. L. Howse, January-December, 1962
- 1.12 Correspondence – J. J. Burt / W. L. Howse, January-September, 1963
- 1.13 Correspondence – J. J. Burt / W. L. Howse, March-December, 1964
- 1.14 Correspondence – J. J. Burt / W. L. Howse, March-December, 1965
- 1.15 Correspondence – J. J. Burt / W. L. Howse, January-December, 1966
- 1.16 Correspondence – J. J. Burt / W. L. Howse, January, 1967
- 1.17 Correspondence – Lawrence North (General Secretary, Baptist Union of New Zealand), 1957-1958
- 1.18 Correspondence – W. L. Howse / James Sullivan, 1957
- 1.19 Correspondence – W. L. Howse / New Zealand Baptists, 1958
- 1.20 Maps – New Zealand
- 1.21 Minutes – Board of Christian Education, Baptist Union of New Zealand, March 26, 1960
- 1.22 Pamphlet – "All-Age Sunday School: What Is It? What Does It Do?," 1963
- 1.23 Pamphlet – "Bible Study for the Whole Family at Church,"
- 1.24 Photographs – Sunday Schools, 1957
- 1.25 Planning to Commence an All-Age Sunday School: A Guide to Churches (Prepared by the Department of Christian Education, Baptist Union of New Zealand), 1959
- 1.26 Program / Photographs – Christian Education Centre – Dedication of Site, July 20, 1958
- 1.27 Proposal to Establish a Board of Christian Education (New Zealand), 1957
- 1.28 Report on a Survey of the First Twenty All-Age Sunday Schools in New Zealand (Prepared by the Department of Christian Education, Baptist Union of New Zealand), 1960
- 1.29 Round-the-World Itinerary for Dr. W. L. Howse, 1958
- 1.30 Suggested Steps for Beginning the All-Ages Sunday Schools
- 1.31 Sunday School Record and Report Cards
- 1.32 Visit of Dr. W. L. Howse – New Zealand – Itinerary/Clippings, 1958