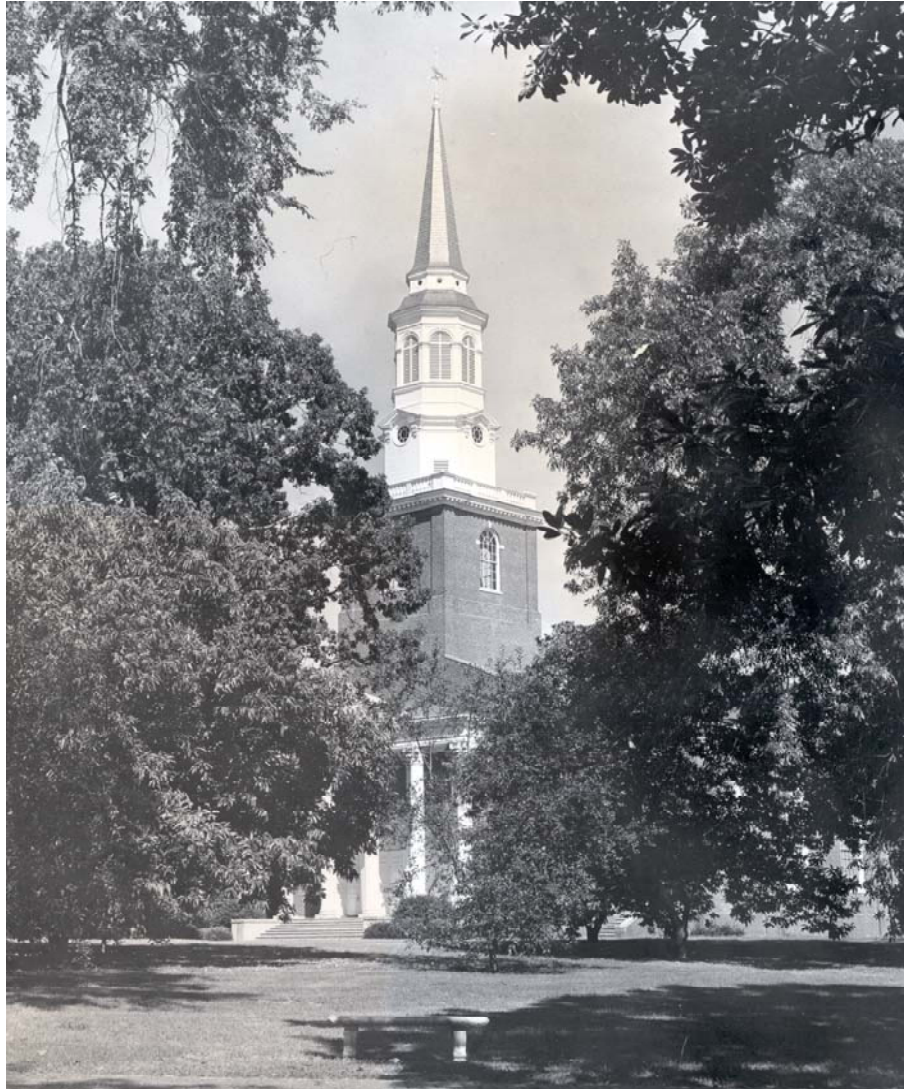


# **SOUTHEASTERN BAPTIST THEOLOGICAL SEMINARY COLLECTION**

**AR 650**



Southern Baptist Historical Library and Archives

2001

Updated February, 2013

# SOUTHEASTERN BAPTIST SEMINARY COLLECTION

## AR 650

### Summary

Main Entry: Southeastern Baptist Seminary Collection

Date Span: 1950 – 2007

Abstract: Collection contains copies of campus directories, seminary catalogs, brochures, programs, addresses, and historical information.

Size: 2 linear ft., 4 boxes

Collection #: AR 650

### Historical Note

Southeastern Baptist Theological Seminary was founded in 1951 in Wake Forest, North Carolina. The seminary secured the property of Wake Forest College after the college relocated to Winston-Salem. The property was renovated and available to the seminary in 1956. Sydnor L. Stealey, a professor at the Southern Baptist Theological Seminary, was named the first president of Southeastern. The seminary offered master's degrees in Divinity, music, and religious education. Doctoral programs were added in the late 1990s. For more information on the history of Southeastern Seminary, see the [Encyclopedia of Southern Baptists](#) and the Baptist history file in the Archives.

### Scope and Content Note

This collection is an artificial collection of various types of information related to Southeastern Baptist Theological Seminary. The bulk of the collection consists of copies of campus directories and seminary catalogs (bulletins). The catalogs cover the years from 1951, and the directories date from 1956. Additional files include descriptive brochures, programs, founders' day addresses, and historical information. Proposals for the seminary site selection from 1950 are also a part of this material. The collection contains four boxes, which are divided into the following three series:

- A. Catalogs, 1951 –
- B. Directories, 1956 –
- C. Subject files

### Arrangement

The catalogs and directories are arranged chronologically, and the subject files are in alphabetical order.

**Provenance**

Artificial collection compiled by Archives staff.

**Preferred Citation**

Southeastern Baptist Theological Seminary, Southern Baptist Historical Library and Archives, Nashville, Tennessee

**Access Restrictions**

None

**Subject Terms**

Southeastern Baptist Theological Seminary (Wake Forest, NC) – History  
Theological seminaries – North Carolina – 20<sup>th</sup> century  
Baptist theological seminaries – North Carolina – 20<sup>th</sup> century

**Related Materials**

Southeastern Baptist Theological Seminary. Crisis Collection, 1987-1988. AR 707. Southern Baptist Historical Library and Archives.

Southern Baptist Convention. Executive Committee. Administrative and Program Planning Files, AR 631. Southern Baptist Historical Library and Archives.

*Outlook*, 1952-

**Container List****A. Catalogs****Box 1**

- 1.1 Catalogs, 1951 – 1955
- 1.2 Catalogs, 1956 – 1959
- 1.3 Catalogs, 1959 – 1964
- 1.4 Catalogs, 1964 – 1968
- 1.5 Catalogs, 1968 – 1972
- 1.6 Catalogs, 1972 – 1977

**Box 2**

- 2.1 Catalogs, 1978 – 1981
- 2.2 Catalogs, 1981 – 1984
- 2.3 Catalogs, 1984 – 1986
- 2.4 Catalogs, 1986 – 1989
- 2.5 Catalogs, 1989 – 1992
- 2.6 Catalogs, 1995 – 1996
- 2.7 Catalogs, 1998 – 1999
- 2.8 Catalogs, 1999 – 2000

### **Box 3**

- 3.1 Catalogs, 2000 – 2001
- 3.2 Catalogs, 2002 – 2003
- 3.3 Catalogs, 2003 – 2005
- 3.4 Catalogs, 2006 – 2007

### **B. Directories**

- 3.5 Directories, 1956 – 1959
- 3.6 Directories, 1961 – 1964
- 3.7 Directories, 1965 – 1968
- 3.8 Directories, 1968 – 1972
- 3.9 Directories, 1982 – 1984
- 3.10 Directories, 1984 – 1986

### **Box 4**

- 4.1 Directories, 1986 – 1988
- 4.2 Directories, 1988 – 1990
- 4.3 Directories, 1990 – 1993

### **C. Subject Files**

- 4.4 Binkley, Olin T. – Inauguration
- 4.5 Brochures
- 4.6 Bulletin, 1952 – 1953
- 4.7 Degree program announcements
- 4.8 Faculty vacancies announcement, 1990
- 4.9 Founders day addresses, 1966, 1973
- 4.10 Iniquity, April, 1983 (April fool edition)
- 4.11 Library guide, 1960 – 1961
- 4.12 Proposal – seminary site – Ashville and Black Mountain, NC, 1950
- 4.13 Proposal – seminary site – Atlanta, GA, 1950
- 4.14 Proposal – seminary site – Charlotte, NC, 1950
- 4.15 Proposal – seminary site – Columbia, SC, 1950
- 4.16 Proposal – seminary site – Columbus, GA, 1950
- 4.17 Resume of significant events in the history of Southeastern Seminary
- 4.18 Women's programs