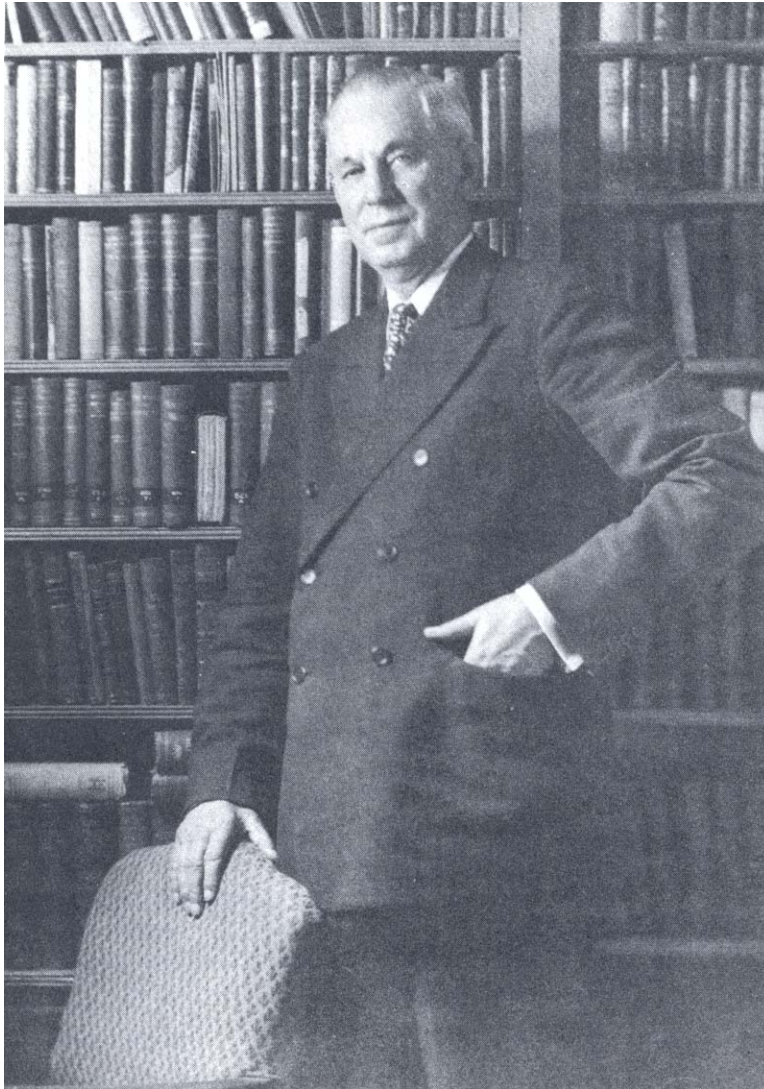


# **J. FRANK NORRIS PAPERS**

**AR 124**



Southern Baptist Historical Library and Archives

Updated July, 2012

# John Franklyn Norris Papers

## AR 124

### Summary

Main Entry: J. Frank Norris Papers

Date Span: 1928 – 1952

Abstract: J. Frank Norris was a Southern Baptist pastor, editor, and leader of the fundamentalist movement among Southern Baptists from 1910 to his death in 1952. The papers document the fundamentalist movement with the Southern Baptists from the 1920's into the post World War II period. The collection consists of Norris' correspondence with a wide range of individuals.

Size: 20 linear ft. (46 boxes)

Collection #: AR 124

### Biographical Sketch

J. Frank Norris was born September 18, 1877 in Dadeville, Alabama and moved with his family to Hubbard City, Texas in 1888. He was ordained to the ministry in 1899 and was pastor of the Baptist church in Mt. Calm, Texas from 1899 to 1903. Norris married Lillian Gaddy in 1902 while earning his A. B. at Baylor University in Waco. In 1905, he graduated from Southern Seminary in Louisville, Kentucky and was pastor of the McKinney Avenue Baptist Church in Dallas, Texas until 1908. Norris was editor and owner of the Baptist Standard in Dallas until 1909, when he became pastor of the First Baptist Church in Fort Worth, and he held that position until his death in 1952.

J. Frank Norris was known as a controversial person, and the following are examples of activities surrounding his life until his death in 1952:

1. Disharmony in the church in 1911 cost the First Baptist Church 1,000 members.
2. In 1912, fire destroyed the church and parsonage, and Norris was indicted for arson, but was acquitted. He was then indicted for perjury in connection with the arson and was tried and acquitted.
3. In 1914, Norris opposed the mission plan of Texas Baptists, and, in 1919, he became a leader of the World's Christian Fundamentals Conference. Beginning in 1917, he published a newspaper, The Searchlight, which later became The Fundamentalist. First Baptist Church discontinued use of Sunday School Board literature, adopting the Bible only as their textbook.
4. In 1923, Norris helped form the Baptist Bible Union of America. The Baptist General Convention of Texas refused to seat Norris, and the local association withdrew fellowship from First Baptist Church in Fort Worth. In 1924, the Baptist General Convention of Texas permanently excluded Norris.
5. In 1926, Norris was indicted for murder in the pistol shooting of D. E. Chipps, a Fort Worth lumber executive, in the church office. Norris was acquitted on a plea of self-defense.

6. He was active in the 1928 presidential campaign, opposing Al Smith for his Catholicism and anti – prohibitionist sympathies.
7. In 1935, Norris became pastor of Temple Baptist Church in Detroit, Michigan, in addition to pasturing First Baptist Church, Fort Worth.
8. In 1947, Norris' accusations of Communist sympathy on Louie Newton came to a climax at the Pastor's Conference preceding the Southern Baptist Convention in St. Louis, Missouri.
9. In 1950, a conflict in the Fundamentalist ranks resulted when G. Beauchamp Vick and others separated from Norris to form a separate organization and seminary.

Norris died August 20, 1952 of a heart attack at a Fundamentalist meeting in Keystone Heights, Florida.

### **Scope and Content Note**

The collection consists of the personal correspondence, clippings, and records from the personal files of Dr. J. Frank Norris from 1928 until his death in 1952. Earlier files were destroyed in a fire at the First Baptist Church of Fort Worth.

The collection contains material on the Fundamentalist movement among Baptists, from the 1920's to the post – World War II years, relative to the methodology and psychology of this particular type of radical dissent.

Dr. Norris was known as a controversialist, and his concerns in the years 1928 – 1952 are grouped around shifting centers of controversy: the Al Smith – Herbert Hoover presidential campaign of 1928; the evolution issue, especially as it pertained to Baylor University; his charges of Communist sympathies on noted American churchmen, especially Louie Newton, president of the Southern Baptist Convention, 1947 – 1948; and a rupture in the ranks of his own organization, dating from June 1, 1950 – such as a standing controversy with the agencies of the Southern Baptist Convention and the Baptist General Convention of Texas.

A great deal of Dr. Norris' energy in this period was devoted to the development of the Bible Baptist Seminary in Fort Worth. The growth and trials of this institution are reflected in his correspondence. Dr. Norris was active in politics, and his sympathies are expressed not only in his correspondence with prominent politicians but also with various industrial executives of Detroit. Dr. Norris was a constant commentator on national and international affairs, from Al Smith to the Korean War.

Dr. Norris' principal correspondents were leaders in the Fundamentalist movement, most notably Louis Entzminger and G. Beauchamp Vick. Dr. Norris' letters addressed to these men generally went unanswered. Among the most revealing correspondence are the files of E. P. Alldredge, The Atlanta Constitution, Dallas Billington, Clinton S. Carnea, The Columbus Ledger – Inquirer, A. Reilly Copeland, Fred Donnelson, W. E. Dowell, Louis Entzminger, B. H. Hilliard, P. E. Hutchinson, R. T. Ketcham, Louie Newton, L. Re Scarborough, Art Wilson, Wendell Zimmerman, and G. Beauchamp Vick.

Among the figures of national significance with whom Dr. Norris exchanged letters were Dwight D. Eisenhower, Lyndon B. Johnson, Richard Nixon, Sam Rayburn, and Harry S. Truman. A file of

special interest contains correspondence with Captain John Birch, with the U.S. Army in China and serving as a missionary.

The collection consists of 47 boxes of correspondence, a few clippings, and miscellaneous items.

**Arrangement**

Arranged alphabetically by correspondent and chronologically under correspondents. Each letter and item in the collection is numbered.

**Provenance**

Purchased from Omer J. Sharp, 1963.

**Preferred Citation**

J. Frank Norris Papers, Southern Baptist Historical Library and Archives, Nashville, Tennessee

**Access Restrictions**

None

**Added Entries/ Names and Subject Terms**

Alldredge, E. P. (Eugene Perry), 1875-1953.

Brittain, W. E.

Copeland, A. Reilly

Dodd, M. E. (Monroe Elmon), 1878-1952.

Entzminger, Louis, 1878-1958.

Martin, T. T. (Thomas Theodore), 1862-1939.

Masters, Victor Irvin, 1867-1954.

Newton, Louie De Votie, 1892-1986.

Scarborough, Lee Rutland, 1870-1945.

Smith, Gerald L. K. (Gerald Lyman Kenneth), 1898-

Vick, G. Beauchamp, 1901-1975.

Shields, T. T. (Thomas Todhunter), 1873-1955.

Stealey, C. P.

Southern Baptist Convention

Federal Council of Churches

First Baptist Church (Ft. Worth, Texas)

Temple Baptist Church (Detroit, Michigan)

Prohibition

Fundamentalism

Modernist – fundamentalist controversy

Evolution – Religious aspects

Anti – Catholicism

## Related Material

For sources of information, see *Encyclopedia of Southern Baptists* and *Who Was Who in America 1951 – 60*, and *Time* magazine, May 19, 1947, p.70, and September 1, 1952.

Falls, Roy Emerson. *A biography of J. Frank Norris, 1877-1952*, 1975.

George W. Truett Collection, Southern Baptist Historical Library and Archives, MFC 119.

Hankins, Barry. *God's rascal : J. Frank Norris & the beginnings of Southern fundamentalism*, 1996.

James Marion Frost Papers, Southern Baptist Historical Library and Archives, AR 795-109.

Norris, J. Frank. *Inside history of First Baptist Church Fort Worth and Temple Baptist Church Detroit : life story of Dr. J. Frank Norris*, 1938.

## Container List

### I. Correspondence

#### Box 1

	Items
1.1 A, 1927	1 – 23
1.2 A, 1928	24 – 55
1.3 A, 1929	56 – 83
1.4 A, 1930	84 – 117
1.5 A, 1932	118 – 119
1.6 A, 1933	120
1.7 A, 1934	121 – 126
1.8 A, 1935	127
1.9 A, 1942	128
1.10 A, 1944	129 – 141
1.11 A, 1945	142
1.12 A, 1946	143 – 144
1.13 A, 1947	145 – 177
1.14 A, 1948	178 – 204
1.15 A, 1949	205 – 212
1.16 A, 1950	213 – 233
1.17 A, 1951	234 – 254
1.18 A, 1952	255 – 267
1.19 Abilene Reporter, 1945	268 – 271
1.20 Abilene Reporter, 1946	272 – 276
1.21 Abu' Igal, S.N., 1950	277 – 279
1.22 Abu' Igal, S.N., 1951	280 – 281
1.23 Abu' Igal, S.N., 1952	282 – 318
1.24 Adair, Lockett, 1949	319 – 320
1.25 Adkins, Luther, 1950	321 – 328
1.26 Advertising (The Fundamentalist), 1947	329

1.27	Affolter, George, 1950	330 – 334
1.28	Affolter, George, 1952	335 – 343
1.29	Akers, Forrest, 1947	344 – 347
1.30	Aldridge, E. P., 1949	348 – 359
1.31	Alexander, Charles, 1929	360 – 372
1.32	Alexander, Charles, 1930	373 – 378
1.33	Alexander, Scotty, 1949	379 – 385
1.34	Alldredge, E. P., 1928	386 – 387
1.35	Alldredge, E. P., 1930	388 – 392
1.36	Alldredge, E. P., 1950	393 – 397
1.37	Allee, Wm. F., 1949	398 – 403
1.38	Allison, H. C., 1928	404 – 407
1.39	Alumbaugh, Ed C., 1928	408 – 414
1.40	American Airlines, 1947	416 – 421
1.41	American Airlines, 1950	422 – 425
1.42	American Christian Palestine Co., 1948	426 – 429
1.43	American Federation of Labor, 1947	430 – 431
1.44	American Railway Agent, 1949	432 – 438
1.45	American Zionist Emergency Cncl., 1948	439 – 442
1.46	Anderson, Earl, 1928	444 – 464
1.47	Anderson, Earl, 1929	465 – 478
1.48	Anderson, Earl	443
1.49	Anderson, Earl, 1930	479 – 494
1.50	Anderson, 1948	495 – 497
1.51	Andrews, S. P., 1934	498 – 501
1.52	Archer, I. E., 1928	502 – 505
1.53	Arditti, Henry 1952	506 – 510
1.54	Arms, William S., 1948	511 – 514
1.55	Armstrong, O. K., 1948	515 – 533
1.56	Armstrong, O. K., 1949	534 – 537
1.57	Arnold, C. C., 1930	538 – 546
1.58	Associated Press, 1948	547 – 556
1.59	Atkisson, Alrna J., 1947	557 – 560
1.60	Atlanta Constitution (Ralph McGill), 1947	561 – 570
1.61	Atlanta Constitution (Ralph McGill), 1948	571 – 601
1.62	Aushburn, Richard, 1948	602 – 606
1.63	B – Misc.	607 – 610
1.64	B – Misc., 1927	611 – 695
1.65	B – Misc., 1928	696 – 833
1.66	B – Misc., 1929	834 – 968
1.67	B – Misc., 1930	969 – 1085
1.68	B – Misc., 1931	1086 – 1139
1.69	B – Misc., 1932	1140 – 1150
1.70	B – Misc., 1933	1151 – 1153
1.71	B – Misc., 1934	1154 – 1167
1.72	B – Misc., 1935	1168 – 1172

1.73	B – Misc., 1936	1173
1.74	B – Misc., 1937	1174 – 1175
1.75	B – Misc., 1939	1176 – 1177
1.76	B – Misc., 1941	1178

### **Box 2**

2.77	B – Misc., 1942	1179
2.78	B – Misc., 1944	1180 – 1259
2.79	B – Misc., 1947	1260 – 1267

### **Box 3**

3.80	B – Misc., 1948	1268 – 1340
3.81	B – Misc., 1949	1341 – 1410
3.82	B – Misc., 1950	1411 – 1501
3.83	B – Misc., 1951	1502 – 1573
3.84	B – Misc., 1952	1574 – 1591
3.85	Backer, Mrs. J. R., 1930	1592 – 1594
3.86	Bailey, J. W., 1927	1595 – 1598
3.87	Bailey, J. W. 1928	1599 – 1603
3.88	Bailey, J. W., 1929	1604 – 1607
3.89	Bain, Alexander, 1927	1608 – 1616
3.90	Baker Hotels, 1927	1617 – 1621
3.91	Baker Hotels, 1928	1622 – 1626
3.92	Baker Hotels (Texas), 1929	1627 – 1633
3.93	Baker Hotels, 1930	1634 – 1638
3.94	Balch, George, 1929	1639 – 1644
3.95	Balch, George, 1934	1645 – 1657
3.96	Baldwin, Ernest, 1930	1658 – 1673
3.97	Ballard, L. S., 1929	1674 – 1676
3.98	Ballard, L. S., 1948	1677 – 1680
3.99	B.G.C.T., 1948	1681 – 1684
3.100	Barber, R. J., 1948	1685 – 1692
3.101	Barber, R. J., 1949	1693 – 1697
3.102	Barber, R. J., 1950	1698 – 1717
3.103	Barber, R. J., 1951	1718 – 1735
3.104	Barker, G. E., 1929	1736 – 1739
3.105	Barnard, Earl R., 1929	1740 – 1742
3.106	Barrett, A. P., 1930	1743 – 1748
3.107	Baskin, Rev. C. A., 1931	1749 – 1758
3.108	Bassett, Dr. Wallace, 1948	1759 – 1761
3.109	Baten, Anderson M., 1928	1762 – 1765
3.110	Baten, Anderson M., 1929	1766 – 1769
3.111	Baten, Anderson M., 1930	1770 – 1773
3.112	Battle Creek Sanitarium, 1951	1774 – 1784
3.113	Baucom, R. G., 1928	1785 – 1790
3.114	Baucom, R. G., 1929	1791 – 1801

3.115	Bauer, L. C., 1930	1802 – 1804
3.116	Baylor University, 1927	1805 – 1808
3.117	Baylor University, 1928	1809 – 1813
3.118	Baylor University, 1930	1814 – 1826
3.119	Beal, R. S., 1927	1827 – 1830
3.120	Beall Clinic, 1949	1831 – 1835
3.121	Beall, Rev. William., 1949	1836 – 1839
3.122	Beard, W. N. (Southwest Magazine), 1944	1840 – 1843
3.123	Beard, W. N., 1948	1844 – 1856
3.124	Beumont Enterprise, 1929	1857 – 1860
3.125	Beauchamp, H., 1928	1861 – 1869
3.126	Beggs, George, 1944	1870 – 1873
3.127	Belcher – Garrison, 1930	1874 – 1875
3.128	Bell, R. E., 1927	1876 – 1879
3.129	Bennett, R. J., 1930	1880 – 1886
3.130	Berry, Clay, 1951	1887 – 1890
3.131	Berryman, W. J., 1930	1891 – 1894

#### **Box 4**

#### **Items**

4.132	Bible Baptist Seminary –Testimonies, 1941	1895 – 1918
4.133	Bible Baptist Seminary, 1948	1919 – 1926
4.134	Bible Baptist Seminary (Ft. Worth), 1951	1927 – 1933
4.135	Bible Baptist Seminary (Detroit), 1951	1934 – 1936
4.136	Bible Institute, 1930	1937 – 1943
4.137	Bibles (Publishers), 1948	1944 – 1957
4.138	Biggs, W. M., 1949	1958 – 1960
4.139	Billington, Charles, 1949	1961 – 1965
4.140	Billington, Charles, 1950	1966 – 1976
4.141	Billington, Charles, 1951	1977 – 1988
4.142	Billington, Dallas, 1944	1989 – 1996
4.143	Billington, Dallas, 1948	1997 – 2022
4.144	Billington, Dallas, 1949	2023 – 2070
4.145	Billington, Dallas, 1950	2071 – 2106
4.146	Billington, Dallas, 1951	2107 – 2122
4.147	Billington, Dallas, 1952	2123 – 2127
4.148	Binford, Lloyd T., 1929	2128 – 2136
4.149	Binford, Lloyd T., 1950	2137 – 2142
4.150	Biographical Encyclopedia of World	1942 – 2143
4.151	Birch, George S., 1949	2144 – 2147
4.152	Birch, John M., 1944	2148 – 2158
4.153	Birch, John M., 1945	2159 – 2162
4.154	Black, Charles H., 1949	2163 – 2165
4.155	Black, H. H., 1927	2166 – 2172
4.156	Black, H. H., 1929	2173 – 2176
4.157	Black, H. H., 1930	2177 – 2179
4.158	Blank and Stoller, 1944	2180 – 2183



4.159	Blaylock, B. B., 1927	2184 – 2186
4.160	Blaylock, B. B., 1928	2187 – 2206
4.161	Blaylock, Truett, 1928	2207 – 2214
4.162	Blomgren, George D., 1929	2215 – 2221
4.163	Bobbitt, Robert Lee, 1930	2222 – 2227
4.164	Bonam, Claud J., 1948	2228 – 2234
4.165	Bonam, Claud, 1949	2235 – 2249
4.166	Bonam, Claud J., 1950	2250 – 2269
4.167	Bonam, Claud J., 1951	2270 – 2275
4.168	Bonner, Gordon, 1950	2276 – 2279
4.169	Book Room Misc., 1936	2280 – 2285
4.170	Book Room Misc., 1937	2286 – 2309
4.171	Book Room Misc., 1938	2310 – 2313
4.172	Book Room Orders, 1938	2314 – 2318
4.173	Boonstra, Carl, 1951	2319 – 2325
4.174	Bosworth, Hattie and Mary, 1928	2326 – 2329
4.175	Bowers, E. R., 1949	2330 – 2334
4.176	Box, John C., 1929	2335 – 2337
4.177	Boyd, J. E., 1927	2338 – 2379
4.178	Boyd, J. E., 1928	2380 – 2397
4.179	Boyd, J. E., 1929	2398 – 2418
4.180	Boyd, J. E., 1930	2419 – 2426
4.181	Boyd, Joe M.	2427
4.182	Boyles, L. L., 1930	2428 – 2432
4.183	Bradfield, w. D., 1928	2433 – 2437
4.184	Bradford, Frank, 1950	2438 – 2453
4.185	Bragg, Paul C., 1929	2454 – 2458
4.186	Brammer, C. J., 1929	2459 – 2464
4.187	Brandon, A. J., 1934	2465 – 2469
4.188	Brandon, W. L., 1929	2470 – 2476
4.189	Brantley, C. H., 1945	2477 – 2480
4.190	Breckenridge American, 1930	2481 – 2483
4.191	Brewer, Fred, 1948	2484 – 2489

**Box 5**

5.192	Bridge, John, 1944	2490 – 2496
5.193	British Consulate General, 1947	2497
5.194	British Correspondence (Misc.), 1941	2498 – 2503
5.195	British Correspondence (Misc.), 1942	2504 – 2519
5.196	British Correspondence, 1945	2520 – 2523
5.197	British Library of Information, 1941	2524 – 2529
5.198	British Ministry of Information, 1941	2530 – 2538
5.199	British Ministry of Information, 1942	2539 – 2553
5.200	Brittain, Maudie, 1929	2554 – 2565
5.201	Britain, Maudie, 1930	2566 – 2569
5.202	Brittain, Ray, 1929	2570 – 2577

**Items**

5.203	Brittain, W. E., 1927	2578 – 2584
5.204	Brittain, W. E., 1928	2585 – 2594
5.205	Brittain, W. E., 1929	2595 – 2604
5.206	Brittain, W. E., 1930	2605 – 2612
5.207	Brooker, J. N., 1930	2613 – 2616
5.208	Brooks, A.P., 1927	2617 – 2622
5.209	Brooks, S. P., 1928	2623 – 2625
5.210	Broughton, Joseph, 1929	2726 – 2627
5.211	Brown, Arthur I., 1927	2628 – 2631
5.212	Brown, Arthur I., 1929	2632 – 2643
5.213	Brown, Dennis J., 1947	2644 – 2648
5.214	Brown, Dennis, 1948	2649 – 2659
5.215	Brown, Dennis, 1949	2660
5.216	Brown, Dennis, 1949	2661 – 2669
5.217	Brown, J. C., 1949	2670 – 2676
5.218	Brown, Perry, 1949	2677 – 2679
5.219	Brownell, Herbert, 1948	2680 – 2683
5.220	Bryan, Alva, 1928	2684 – 2687
5.221	Bryan, John E., 1928	2688 – 2694
5.222	Bryce, J. W., 1929	2695 – 2701
5.223	Buchanan, M.G., 1928	2702 – 2710
5.224	Bulgin, E. J., 1929	2711 – 2720
5.225	Bullington, Orville, 1931	2721 – 2723
5.226	Burns, William H., 1950	2724 – 2730
5.227	Burpo, C. W., 1949	2731 – 2732
5.228	Burt, R. E., 1928	2733 – 2738
5.229	Bustard, W. W., 1928	2739 – 2743
5.230	Butler, Neil, 1949	2744 – 2745
5.231	Byers, Dillard L., 1944	2746 – 2749
5.232	C – Misc.	2750 – 2752
5.233	C – Misc., 1914	2753
5.234	C – Misc., 1927	2754 – 2825
5.235	C – Misc., 1928	2826 – 2937
5.236	C – Misc., 1929	2938 – 3071
5.237	C – Misc., 1930	3072 – 3178
5.238	C – Misc., 1931	3179 – 3228

**Box 6**

6.239	C – Misc., 1932
6.240	C – Misc., 1933
6.241	C – Misc., 1934
6.242	C – Misc., 1935
6.243	C – Misc., 1936
6.244	C – Misc., 1937
6.245	C – Misc., 1938
6.246	C – Misc., 1939

**Items**

3229 – 3343
3344 – 3368
3369 – 3375
3376 – 3377
3378 – 3382
3383
3384 – 3389
3390 – 3393

6.247	C – Misc., 1940	3394 – 3396
6.248	C – Misc., 1941	3397
6.250	C – Misc., 1943	3398 – 3404
6.251	C – Misc., 1944	3405 – 3471
6.252	C – Misc., 1945	3472 – 3473
6.253	C – Misc., 1947	3474 – 3562
6.254	C – Misc., 1948	3563 – 3638
6.255	C – Misc., 1949	3639 – 3708
6.256	C – Misc., 1950	3709 – 3754
6.257	C – Misc., 1952	3755 – 3811
6.258	C – Misc., 1952	3812 – 3846
6.259	Cabell, Ben and Earl, 1950	3847 – 3850
6.260	Cain, C. M., 1928	3851 – 3854
6.261	Calvary Baptist Church, 1928	3855 – 3860
6.262	Gampbell, Harvey, 1947	3861 – 3864
6.263	Cannon, Hazel, 1951	3865 – 3868
6.264	Cannon, James Jr., 1930	3869 – 3874
6.265	Carlisle, Herman B., 1947	3875 – 3887
6.266	Carlson, Frank, 1948	3888 – 3890
6.267	Carnes, C. S., 1929	3891 – 3899
6.268	Carnes, C. S., 1930	3900 – 3903
6.269	Carr, A.S. E., 1950	3904 – 3908
6.270	Carroll, Gladys, 1930	3909 – 3918
6.27	Carroll, Hulen R., 1920	3919 – 3923

**Box 7**

7.272	Carswell, E. R., 1930	3924 – 3928
7.273	Carswell, E. R., 1929	3929 – 3938
7.274	Carter, Amon G., 1949	3939 – 3941
7.275	Carter, Amon, 1952	3942 – 3946
7.276	Carter, Hodding, 1949	3947 – 3948
7.277	Cartoons	3949
7.278	Carver, W. O., 1933	3950 – 3954
7.279	Cassedy, J. W., 1928	3955 – 3964
7.280	Caston, James P., 1950	3965 – 3968
7.281	Cates, Cleff, 1927	3969 – 3972
7.282	Cates, Gerald, 1947	3973 – 3980
7.283	Catholics	3981 – 3983
7.284	Catholics, 1932	3984 – 3997
7.285	Catholics, 1946	3998 – 4004
7.286	Catholics, 1949	4005 – 4010
7.287	Catholics, 1951	4011 – 4013
7.288	Cavin, David, 1949	4014 – 4019
7.289	Champion, H.T., 1949	4020 – 4023
7.290	Childers, M. A., 1930	4024 – 4027
7.291	Chilton, W. C., 1932	4028 – 4031

**Items**

7.292	Chipps, D. E. (Sworn Depositions)	4032 – 4034
7.293	Christensen, Rasrnus Estate, 1944	4035 – 4042
7.294	Christian Advocate, 1950	4043 – 4056
7.295	Christian Life and Times, 1947	4057 – 4059
7.296	Christie, L. R., 1929	4060 – 4064
7.297	Chrysler Corp., 1948	4065 – 4072
7.298	Church, John M., 1948	4073 – 4077
7.299	Churches of Christ, 1944	4078 – 4081
7.300	Citizen's National Bank (Mrs. J.F.N – Abilene, TX), 1930	4082 – 4093
7.301	City Commission, 1919	4094
7.302	Clapp, Clinton K., 1949	4095 – 4097
7.303	Clapp, D. B., 1927	4098 – 4100
7.304	Clapp, D. B., 1928	4101 – 4105
7.305	Clapp, D. B., 1929	4106 – 4111
7.306	Clapp, D. B., 1930	4112 – 4148
7.307	Clark, Marvin, 1950	4149 – 4156
7.308	Clark, Tam, 1948	4157 – 4159
7.309	Clark, Tam, 1949	4160 – 4162
7.310	Clark, Wm. Lloyd, 1928	4163 – 4173
7.311	Cleburne Morning Review, 1927	4174
7.312	Clem, Charles E., 1931	4175 – 4182
7.313	Clem, Joe, 1947	4183 – 4191
7.314	Clergy Permits, 1947	4192 – 4198
7.315	Clergy Permit Forms, 1950	4199 – 4213
7.316	Cleveland, Grover, 1930	4214 – 4222
7.317	Clifton, Paul, 1928	4223 – 4231
7.318	Clifton, Paul, 1931	4232 – 4236
7.319	Clifton, Paul, 1932	4237 – 4250
7.320	Cobbs, Thamas D., 1930	4251 – 4254
7.321	Coffer, Shirley Wilcox, 1947	4255 – 4271
7.322	Cogle, B. A., 1944	4272 – 4276
7.323	Cogle, B. A., 1947	4277 – 4285
7.324	Cogle, B. A., 1948	4286 – 4295
7.325	Cogle, B. A., 1949	4296 – 4314
7.326	Cogle, B. A., 1950	4315 – 4320
7.327	Cogle, B. A., 1951	4321 – 4337
7.328	Colbert, E. N., 1930	4338 – 4344
7.329	Colbert, L. L., 1948	4345 – 4362
7.330	Colbert, L. L., (Tex) 1949	4363 – 4377
7.331	Colbert, L. L. 1950	4378 – 4392
7.332	Colbert, L. L., (Chrysler Corp.) 1951	4393 – 4408
7.333	Colbert, L. L., (Chrysler Corp.) 1952	4409 – 4419
7.334	Coleman, W. F., 1929	4420 – 442
7.335	Coleman, W. F., 1930	4428 – 4432
7.336	Collins, C. B., 1928	4433 – 4439

7.337	Collins, Chester B., 1930	4440 – 4445
7.338	Collina, H. Lee, 1932	4446 – 4451
7.339	Collins, Sue C. (oldest member F.B.C.)	4452
7.340	Colquitt, O. B., 1929	4453 – 4456
7.341	Colvin, G. H., 1928	4457 – 446
7.342	Colyar, R. N., 1932	4464 – 4466
7.343	Compere, Truitt, 1930	4467 – 4470
7.344	Communism	4471 – 4476

**Box 8**

8.345	Communism, 1932	4477
8.346	Communism, 1948	4478 – 4490
8.347	Communism, 1949	4491 – 4495
8.348	Communism, 1950	4496
8.349	Connally, Tom, 1944	4497 – 4500
8.350	Connally, Tom, 1945	4501
8.351	Connally, Tom, 1947	4502 – 4519
8.352	Connally, Tom, 1948	4520 – 4537
8.353	Connally, Tom, 1949	4538 – 4563
8.354	Connally, Tom, 1950	4564 – 4571
8.355	Connally, Tom, 1951	4572 – 4590
8.356	Conner, Harry, 1927	4591 – 4604
8.357	Conservative Baptist Assoc. (Temple Baptist Church), 1947	4605
8.358	Construction Controls Division, 1952	4606 – 4612
8.359	Continental National Bank, 1928	4613 – 4618
8.360	Continental National Bank, 1948	4619 – 4624
8.361	Convention, 1949	4625 – 4634
8.362	Cook, Bob, 1949	4635 – 4637
8.363	Cook, Joseph C., 1929	4638 – 4643
8.364	Cook, Willard, 1944	4644 – 4650
8.365	Cook, Willard, 1948	4651 – 4656
8.366	Cook, Willard, 1950	4657 – 4664
8.367	Cook, Willard, 1951	4665 – 4668
8.368	Cooke, Clay	4669
8.369	Cooke, Clay, 1927	4670 – 4676
8.370	Cooke, Clay, 1928	4677 – 4683
8.371	Cooke, Clay, 1931	4684 – 4686
8.372	Cooke, Clay, 1941	4687 – 4694
8.373	Cooke, Clay, 1947	4695 – 4701
8.374	Cooper, R. M., 1930	4702 – 4705
8.375	Cooper, Stanford., 1947	4706 – 4721
8.376	Cooper, Sir Stanford, 1949	4722 – 4729
8.377	Copas, B. A., 1928	4730 – 4733
8.378	Copeland, A. Reilly, 1927	4734 – 4785
8.379	Copeland, A. Reilly, 1928	4786 – 4842

8.380	Copeland, A. Reilly, 1929	4843 – 486S
8.381	Copeland, A. Reilly, 1930	4870 – 4881
8.382	Copeland, A. Reilly, 1931	4882 – 4906
8.383	Copeland, A. Reilly, 1932	4907 – 4930
8.384	Copeland, A. Reilly, 1933	4931 – 4934
8.385	Corley, F. E., 1948	4935
8.386	Corpening, R. I., 1928	4936 – 4948
8.387	Corpus Christi, 1949	4949 – 955
8.388	Cosby, Fairfax, 1928	4956 – 4960
8.389	Cosnor, Oscar, 1948	4961 – 4963
8.390	Coulton, George, 1944	4964 – 4967
8.391	Coulton, George, 1947	4968 – 4970
8.392	Coutts, J. Dalbert, 1930	4971 – 4976
8.393	Coutts, J. Dalbert, 1931	4977 – 4987
8.394	Covington, C. C., 1932	4988 – 4990
8.395	Cox, Benjamin, 1928	4991 – 4998
8.396	Cox, Benjamin, 1929	4999 – 5006
8.397	Cox, Horner, 1948	5007 – 5011

**Box 9**

9.398	Coyle, M. E., 1947	5012 – 5031
9.399	Coyle, M. E., 1948	5032 – 5053
9.400	Coyle, M. E., 1949	5054 – 5057
9.401	Craeger, R. B., 1927	5058 – 5069
9.402	Craeger, R. B., 1928	5070 – 5088
9.403	Craeger, R. B., 1929	5089 – 5106
9.404	Craeger, R. B., 1930	5107 – 5111
9.405	Craeger, R. B., 1932	5112 – 5116
9.406	Craig, M. P., 1929	5117 – 5121
9.407	Cranfill, J. B., 1928	5122 – 5130
9.408	Crittenden, George, 1950	5131 – 5138
9.409	Crittenden, M. A., 1931	5139 – 5148
9.410	Crofts, wm. H., 1949	5149 – 5153
9.411	Crofts, wm. H., 1950	5154 – 5169
9.412	Crofts, wm. H., 1951	5170 – 5175
9.413	Crow, Allen, 1944	5176 – 5179
9.414	Crow, Allen, 1949	5180 – 5190
9.415	Crowley, Dale	5191 – 5193
9.416	Crowley, Dale, 1927	5194 – 5196
9.417	Crowley, Dale, 1928	5197 – 5203
9.418	Crowley, Dale, 1929	5204 – 5208
9.419	Crowley, Dale, 1930	5209 – 5212
9.420	Crowley, Dale, 1931	5213 – 5232
9.421	Crowley, Dale, 1932	5233 – 5247
9.422	Crowley, Dale, 1933	5248 – 5258
9.423	Culbertson, 01in, 1949	5259 – 5260

**Items**

9.424	Culver Military Academy, 1926	5261 – 5267
9.425	Culver Military Academy, 1927	5268 – 5297
9.426	Culver Military Academy, 1928	5298 – 5314
9.427	Cumbie, R. R., 1929	5315 – 5320
9.428	Cumbie, R. R., 1930	5321 – 5326
9.429	Cummings, O. Sam, 1931	5327 – 5329
9.430	Cunningham, R. H., 1931	5330 – 5331
9.431	Cunningham, R. H., 1932	5332 – 5335
9.432	Cunningham, R. H., 1933	5336 – 5341
9.433	D – Misc.	5342
9.434	D – Misc., 1927	5343 – 5380
9.435	D – Misc., 1928	5381 – 5431
9.436	D – Misc., 1929	5432 – 5486
9.437	D – Misc., 1930	5487 – 5528
9.438	D – Misc., 1932	5529 – 5533
9.439	D – Misc., 1934	5534
9.440	D – Misc., 1935	5535 – 5539
9.441	D – Misc., 1937	5540 – 5542
9.442	D – Misc., 1938	5543 – 5545
9.443	D – Misc., 1939	5546 – 5547
9.444	D – Misc., 1942	5548 – 5549
9.445	D – Misc., 1943	5550 – 5552
9.446	D – Misc., 1944	5553 – 5589

**Box 10**

10.447	D – Misc., 1945	5590 – 5596
10.448	D – Misc., 1946	5597 – 5599
10.449	D – Misc., 1947	5600 – 5668
10.450	D – Misc., 1948	5669 – 5710
10.451	D – Misc., 1949	5711 – 5746
10.452	D – Misc., 1950	5747 – 5781
10.453	D – Misc., 1951	5782 – 5811
10.454	D – Misc., 1952	5812 – 5823
10.455	Daily Texas, 1949	5824 – 5835
10.456	Dallas News, 1948	5836 – 5850
10.457	Dallas Tent and Awning, 1934	5851 – 5854
10.458	Davant, R. P., 1929	5855 – 5888
10.459	Davant, R. P., 1930	5889 – 5893
10.460	David Ben M., 1949	5894 – 5897
10.461	Davidson, w. Ben, 1949	5898 – 5905
10.462	Davidson, w. B., 1950	5906 – 5910
10.463	Davis, Ben M. (David)? 1948	5911 – 5919
10.464	Davis, Bert H., 1929	5920 – 5925
10.465	Davis, J. Boyd, 1947	5926 – 5928
10.466	Davis, J. Boyd, 1949	5929 – 5932
10.467	Davis, W. F., 1950	5933 – 5936

**Items**

10.468 Day, Carroll V., 1927	5937 – 5941
10.469 Day, C. V., 1930	5942 – 5949
10.470 Day, Richard E., 1948	5950 – 5953
10.471 Dealey, Al, 1951	5954 – 5971
10.472 Dean, Edgar, 1944	5972 – 5975
10.473 Dean, John H., 1928	5976 – 5979
10.474 Dean, John Marvin, 1929	5980 – 5986
10.475 Dean, John Marvin, 1930	5987 – 5989
10.476 Deannore, B. F., 1944	5990 – 5994
10.477 Deannore, B. F., 1948	5995 – 6005
10.478 Debts. – Misc., 1939	6006 – 6007
10.479 Debts. – Personal (J.F.N.), 1950	6008 – 6043
10.480 Debts. – Personal (J.F.N.), 1951	6044 – 6088
10.481 Decius, H.B., 1928	6089 – 6094
10.482 Deen, Mayor Edgar, 1950	6095 – 6098
10.483 Defender, 1927	6099 – 6102
10.484 Dennis, Truett A., 1949	6103 – 6111
10.485 De Spa, Carl, 1949	6112 – 6131
10.486 Dew, James F., 1947	6132 – 6136
10.487 Dewey, Thamas E, 1948	6137 – 6144
10.488 Dickson Publishing Co., 1949	6145 – 6156
10.489 Dilbeck, T. J., 1950	6157 – 6165
10.490 Dilbeck, W. D., 1929	6166 – 6170
10.491 Dilbeck, W. D., 1930	6171 – 6174
10.492 Dillehay, R. H., 1927	6175 – 6181
10.493 Dillon, John H., 1944	6182 – 6188
10.494 Directors (Fellowship), 1948	6189 – 6190
10.495 Directors of the Fellowship, 1949	6191
10.496 Discipline Committee, 1945	6192 – 6222
10.497 Doak, W. N., 1929	6223 – 6226
10.498 Dodd, M.E., 1929	6227 – 6230
10.499 Dodd, M.E., 1930	6231 – 6237
10.500 Doorill, R. M., 1950	6238 – 6245
10.501 Dobson, W. B., 1930	6246 – 6251

**Box 11**

11.502 Donnelson, Fred, 1944	6252 – 6279
11.503 Donnelson, Fred, 1948	6280 – 6330
11.504 Donnelson, Fred, 1949	6331 – 6338
11.505 Donnelson, Fred, 1950	6339 – 6356
11.506 Donnelson, Fred, 1951	6357
11.507 Donnelson, Paul, 1950	6358 – 6367
11.508 Donnitory (War Production Bd.), 1944	6368 – 6375
11.509 Donnitory, 1948	6376 – 6377
11.510 Daugherty, E. K., 1929	6378 – 6381
11.511 Douglas, Helen Gohagan, 1947	6382 – 6384

**Items**



11.512 Douglass, Francis A., 1928	6385 – 6388
11.513 Douglass, Francis A., 1929	6389 – 6392
11.514 Dove, D. C., 1930	6393 – 6397
11.515 Dowell, W. E., 1944	6398 – 6407
11.516 Dowell, W. E., 1947	6408 – 6500
11.517 Dowell, W. E., 1948	6501 – 6536
11.518 Dowell, W. E., 1949	6537 – 6557
11.519 Dowell, W. E., 1950	6558 – 6588
11.520 Dreystadt, Nick, 1948	6589 – 6590
11.521 Duckett, John, 1949	6591 – 6593
11.522 Duckett, John, 1950	6594 – 6598
11.523 Duncan, M. H., 1928	6599 – 6614
11.524 Duncan, M. H., 1929	6615 – 6628
11.525 Duncan, M. H., 1930	6629 – 6641
11.526 Duncan, M. H., 1944	6642 – 6656
11.527 Duncan, M. H., 1947	6657 – 6666
11.528 Duncan, M. H., 1948	6667 – 6674
11.529 Duncan, Ruth, 1947	6675 – 6678
11.530 Duncan, Ruth, 1951	6679 – 6694
11.531 Dunham, W. R., 1947	6695 – 6698
11.532 Dunlap, Alex O., 1947	6699 – 6703
11.533 Dunn, Willice M., 1948	6704 – 6709
11.534 DuPriest, John B., 1928	6710 – 6713
11.535 Dyer, Charley, 1944	6714 – 6719
11.536 Dyer, Charley, 1950	6720 – 6733
11.537 E – Misc.	6734
11.538 E – Misc., 1925	6735
11.539 E – Misc., 1926	6736
11.540 E – Misc., 1927	6737 – 6751
11.541 E – Misc., 1928	6752 – 6775
11.542 E – Misc., 1929	6776 – 6795
11.543 E – Misc., 1930	6796 – 6818
11.544 E – Misc., 1932	6819 – 6822
11.545 E – Misc., 1933	6823
11.546 E – Misc., 1934	6824 – 6829
11.547 E – Misc., 1935	6830 – 6832
11.548 E – Misc., 1936	6833
11.549 E – Misc., 1937	6834 – 6835

**Box 12**

12.550 E – Misc., 1939	6836 – 6838
12.551 E – Misc., 1940	6839 – 6841
12.552 E – Misc., 1944	6842 – 6864
12.553 E – Misc., 1945	6865 – 6866
12.554 E – Misc., 1946	6867
12.555 E – Misc., 1947	6868 – 6875

**Items**

12.556 E – Misc., 1948	6876 – 6891
12.557 E – Misc., 1949	6892 – 6913
12.558 E – Misc., 1951	6914 – 6919
12.559 E – Misc., 1951	6920 – 6938
12.560 E – Misc., 1952	6939 – 6943
12.561 Eastland, James O., 1944	6944 – 6949
12.562 Eisenhower, Dwight D., 1950	6950 – 6952
12.563 Eisenhower, Dwight D., 1952	6953 – 6957
12.564 Elliott, E. D., 1948	6958 – 6965
12.565 Elliott, Ernest D., 1949	6966 – 6993
12.566 Ellis, Audie S., 1950	6994 – 6999
12.567 Enoch, W. M., 1949	7000 – 7004
12.568 Entzminger, Louis, 1928	7005 – 7010
12.569 Entzminger, Louis, 1941	7011
12.570 Entzminger, Louis, 1944	7012 – 7022
12.571 Entzminger, Louis, 1947	7023 – 7026
12.572 Entzminger, Louis, 1/1/48 to 5/1/48	7027 – 7161
12.573 Entzminger, Louis, 5/1/48 to 12/31/48	7162 – 7289
12.574 Entzminger, Louis, 1949	7290 – 7305
12.575 Entzminger, Louis, 1950	7306 – 7380
12.576 Entzminger, Louis, 1951	7381 – 7387
12.577 Entzminger, Louis, 1952	7388 – 7396
12.578 Erskine, John, 1947	7401
12.579 Estes, Carl, 1949	7402 – 7407
12.580 European Trip, 1951	7408 – 7435
12.581 Evans, B. O., 1930	7436 – 7452

**Box 13**

13.582 F – Misc.	7453 – 7455
13.583 F – Misc., 1915	7456
13.584 F – Misc., 1916	7457 – 7459
13.585 F – Misc., 1925	7460 – 7461
13.586 F – Misc., 1927	7462 – 7486
13.587 F – Misc., 1928	7487 – 7521
13.588 F – Misc., 1929	7522 – 7576
13.589 F – Misc., 1930	7577 – 7626
13.590 F – Misc., 1932	7627 – 7628
13.591 F – Misc., 1933	7629 – 7634
13.592 F – Misc., 1934	7635 – 7639
13.593 F – Misc., 1935	7640 – 7641
13.594 F – Misc., 1939	7642 – 7652
13.595 F – Misc., 1941	7653
13.596 F – Misc., 1943	7654 – 7655
13.597 F – Misc., 1944	7656 – 7688
13.598 F – Misc., 1945	7689 – 7693
13.599 F – Misc., 1946	7694

**Items**

13.600 F – Misc., 1947	7695 – 7749
13.601 F – Misc., 1948	7750 – 7798
13.602 F – Misc., 1949	7799 – 7829
13.603 F – Misc., 1950	7830 – 7849
13.604 F – Misc., 1951	7850 – 7883
13.605 F – Misc., 1952	7884 – 789613
13.606 Farley, James A., 1944	7897 – 7902
13.607 Farley, James A., 1947	7903 – 7908
13.608 Farley, James A., 1948	7909 – 7913
13.609 Farmer, John G., 1927	7914 – 7920
13.610 Farr, F. W., 1930	7921 – 7929
13.611 Featherstone, W. S., 1927	7930 – 7934
13.612 Featherstone, W. S., 1928	7935 – 7938
13.613 Federal Council of Churches	7939 – 7940
13.614 Federal Council of Churches, 1935	7941 – 7942
13.615 Federal Council of Churches, 1936	7943 – 7949
13.616 Federal Council of Churches, 1937	7950 – 7951
13.617 Federal Council of Churches, 1938	7952 – 7954
13.618 Federal Council of Churches, 1939	7955 – 7960
13.619 Federal Life Insurance, 1927	7961 – 7966
13.620 Fellowship Forum, 1927	7967 – 7970
13.621 Fellowship Forum, 1928	7971 – 7990
13.622 Fellowship Forum, 1929	7991 – 8006
13.623 Ferm, A. W., 1949	8007 – 8012
13.624 Finance Committee, 1944	8013 – 8032
13.625 Fire Letters, 1927	8033 – 8092

**Box 14**

**Items**

14.626 First Baptist Church	8093 – 8094
14.627 First Baptist Church, 1928	8095
14.628 First Baptist Church, 1945	8096
14.629 First Baptist Church, 1948	8097 – 8123
14.630 First Baptist Church (city tax exempt), 1927	8124
14.631 First Baptist Church (Debts), 1934	8125 – 8138
14.632 First Baptist Church (Expenses), 1934	8139 – 8145
14.633 First Baptist Church, 1935	8146 – 8150
14.634 First Baptist Church (Financial Rpts), 1936	8151 – 8156
14.635 First Baptist Church (Financial Rpts), 1937	8157 – 8160
14.636 First Baptist Church (Financial), 1947	8161 – 8162
14.637 First Baptist Church, 1949	8163 – 8169
14.638 First Baptist Church, 1951	8170
14.639 First Name Only	8171 – 8185
14.640 First Name Only, 1927	8186
14.641 First Name Only, 1928	8187
14.642 First Name Only, 1929	8188 – 8189
14.643 First Name Only, 1930	8190 – 8191

14.644 First Name Only, 1932	8192 – 8195
14.645 First Name Only, 1935	8196
14.646 First Name Only, 1944	8197 – 8198
14.647 First Name Only, 1948	8199 – 8201
14.648 First Name Only, 1949	8202 – 8206
14.649 First Name Only, 1945	8207
14.650 First Name Only, 1947	8208 – 8211
14.651 First Name Only, 1950	8212 – 8217
14.652 First Name Only, 1951	8218 – 8220
14.653 Fishburn, W. B., 1927	8221 – 8223
14.654 Fisher, Charles, 1928	8224 – 8242
14.655 Fisher, Beeman, 1947	8243 – 8247
14.656 Fitts, William C., 1947	8248 – 8250
14.657 Floyd, B. R., 1927	8251 – 8276
14.658 Forcey, Clark J., 1934	8277 – 8280
14.659 Ford Motor Co. (Courtesy Cred.), 1947	8281 – 8288
14.660 Ford, Ollie, 1948	8289 – 8295
14.661 Ford, Ollie, 1950	8296 – 8301
14.662 Foreign Correspondence, 1952	8302 – 8316
14.663 Foreign Mission Board, 1930	8317 – 8320
14.664 Form Letters, 1927	8321 – 8323
14.665 Form Letters, 1928	8324 – 8327
14.666 Form Letters, 1932	8328 – 8330
14.667 Form Letters, 1933	8331 – 8333
14.668 Form Letters, 1944	8334 – 8354
14.669 Form Letters, 1948	8355 – 8411
14.670 Form Letters, 1949	8412 – 8420
14.671 Form Letters, 1950	8421 – 8425
14.672 Form Letters, 1951	8426 – 8442
14.673 Form Letters, 1952	8443 – 8447
14.674 Fonnán, Guy, 1949	8448 – 8450
14.675 Forrestal, James, 1944	8451 – 8455
14.676 Forrestal, James, 1947	8456 – 8457
14.677 Fort, H. Frank, 1944	8458 – 8462
14.678 Fort, Frank, 1948	8463 – 8466
14.679 Fort, Frank, 1950	8467 – 8472
14.680 Fortney, W. H., 1929	8473 – 8476
14.681 Fort Worth, City of, 1913	8477 – 8479
14.682 Fort Worth, City of, 1933	8480 – 8482
14.683 Fort Worth (Corruption & Vice), 1933	8483 – 8492
14.684 Fort Worth National Bank, 1927	8493 – 8496
14.685 Fort Worth Public Schools, 1947	8497
14.686 Foster, Isaac, 1948	8498 – 8502
14.687 Foster, Ike, 1950	8503 – 8506
14.688 Fox, George, 1947	8507 – 8514
14.689 Fox, George, 1948	8515 – 8521

14.690 Fraser, William, 1947	8522 – 8530
14.691 Fraser, William, 1948	8531 – 8539
14.692 Fraser, William, 1949	8540 – 8545
14.693 Fraser, William, 1950	8546 – 8559
14.694 Fraser, William, 1951	8560 – 8568
14.695 Freeman, John D., 1928	8569 – 8577

### **Box 15**

	<b>Items</b>
15.696 Friedburger, Pearl, 1944	8578 – 8580
15.697 Friedburger, Pearl, 1947	8581 – 8584
15.698 Friedburger, Pearl 1949	8585 – 8592
15.699 Friedburger, Pearl Norris 1951	8593 – 8607
15.700 Fullingim, Mrs. John 1949	8608 – 8613
15.701 Fundamental Baptist Bible Seminary, 1944	8614 – 8628
15.702 Fundamental Baptist Bible Seminary, 1945	8629 – 8634
15.703 Fundamental Baptist Bible Seminary, 1948	8635 – 8640
15.704 F.B.B.S. Class on Daniel, 1948	8641 – 8642
15.705 Fundamental Baptist Bible Seminary, 1949	8643 – 8703
15.706 F.B.B.S. – Miscellaneous, 1950	8704 – 8789
15.707 F.B.B.S. – Correspondence, 1950	8790 – 8862
15.708 F.B.B.S. (Entzminger Resigns), 1950	8863 – 8871
15.709 F.B.B.S. (G.B. Vick), 1950	8872 – 8878
15.710 Fundamental Baptist Fellowship, 1946	8879 – 8887
15.711 Fundamental Baptist Fellowship, 1947	8888 – 8990
15.712 Fundamentalism, 1932	8991 – 8994
15.713 Fundamentalist, 1936	8996 – 9116
15.714 Fundamentalist, 1944	9117 – 9156
15.715 Fundamentalist, 1947	9157 – 9160
15.716 Fundamentalist, 1950	9161 – 9196
15.717 Fundamentalist, 1951	9197 – 9241
15.718 Fundamentalist, 1947	9215 – 9222
15.719 Fundamentalist Publishing Co., 1948	9223 – 9235
15.720 Funderburk, A. R., 1949	9236 – 9239
15.721 G – Miscellaneous	9240 – 9242
15.722 G – Miscellaneous, 1927	9243 – 9275

### **Box 16**

	<b>Items</b>
16.723 G – Miscellaneous, 1928	9276 – 9310
16.724 G – Miscellaneous, 1929	9311 – 9374
16.725 G – Miscellaneous, 1930	9375 – 9417
16.726 G – Miscellaneous, 1931	9418 – 9422
16.727 G – Miscellaneous, 1932	9423 – 9426
16.728 G – Miscellaneous, 1933	9427 – 9428
16.729 G – Miscellaneous, 1934	9429 – 9434
16.730 G – Miscellaneous, 1935	9435 – 9442
16.731 G – Miscellaneous, 1940	9443 – 9445

16.732 G – Miscellaneous, 1944	9446 – 9477
16.733 G – Miscellaneous, 1947	9478 – 9480
16.734 G – Miscellaneous, 1948	9481 – 9522
16.735 G – Miscellaneous, 1949	9523 – 9555
16.736 G – Miscellaneous, 1950	9556 – 9581
16.737 G – Miscellaneous, 1951	9582 – 9607
16.738 G – Miscellaneous, 1952	9608 – 9629
16.739 Gaddy, J. M., 1928	9630 – 9635
16.740 Gaddy, J. M., 1929	9636 – 9642
16.741 Garmany, James F., 1949	9643 – 9646
16.742 Gates, I. E., 1927	9647 – 9656
16.743 Gates, I. E., 1928	9657 – 9664
16.744 Gates, I. E., 1929	9665 – 9673
16.745 Gates, I. E., 1930	9674 – 9686
16.746 Greer, W. E., 1934	9687 – 9690
16.747 General American Life Ins. Co., 1933	9691 – 9704
16.748 General American Life Ins. Co., 1934	9705 – 9774
16.749 General American Life Ins. Co., 1935	9775 – 9812
16.750 General American Life Ins. Co., 1936	9813 – 9814
16.751 General American Life Ins. Co., 1937	9815 – 9820
16.752 General American Life Ins. Co., 1938	9821
16.753 General Ministers Radio Comm., 1948	9822 – 9825
16.754 General Motors, 1927	9826 – 9832
16.755 Gibson, Oscar, 1949	9833 – 9843
16.756 Gidley, Max, 1948	9844 – 9846
16.757 Gidley, R. M., 1948	9847 – 9850
16.758 Gilbert, W. A., 1927	9851 – 9857
16.759 Gilliam, J. M. (Radio Business), 1927	9858 – 9893
16.760 Gilliam, J. M. (Radio Business), 1928	9894 – 9948

**Box 17**

17.761 Gilliam, J. M. (Radio Business), 1929	9949 – 10078
17.762 Gilliam, J. M. (Radio Business), 1930	10079 – 10115
17.763 Gilliam, J. M. (Radio Business), 1931	10116 – 10140
17.764 Gillon, J. W., 1927	10141 – 10144
17.765 Gillion, J. W., 1928	10145 – 10149
17.766 Glass. Carter, 1929	10150 – 10153
17.767 Glenn, J. E., 1934	10154 – 10157
17.768 Glen Rose Camp	10158 – 10160
17.769 Godsoe, Frank, 1948	10161 – 10168
17.770 Godsoe, Frank, 1949	10169 – 10178
17.771 Godsoe, Frank, 1950	10179 – 10185
17.772 Godsoe, Frank, 1951	10186 – 10192
17.773 Goldberg, Ben, 1950	10193 – 10195
17.774 Good, R. L., 1927	10196 – 10199
17.775 Godsoe, Frank, 1944	10200 – 102043

**Items**

17.776 Grace, H. B., 1929	10205 – 10223
17.777 Grace, H. B., 1930	10224 – 10228
17.778 Graham, Billy, 1950	10229 – 10241
17.779 Graham, Billy, 1951	10242 – 10273
17.780 Graham, D.R., 1930	10274 – 10307
17.781 Graham, D. R., 1931	10308 – 10319
17.782 Grant, Alton V., 1928	10320 – 10322
17.783 Grantham, L. T., 1944	10323 – 10331
17.784 Grantham, L.T., 1949	10332 – 10333
17.785 Grantham, L. T., 1950	10334 – 10342
17.786 Gray, A. A., 1930	10343 – 10347
17.787 Greenwell, E. H., 1929	10348 – 10352
17.788 Graves, W. T. 1927	10353 – 10357
17.789 Grogan, O. H., 1927	10358 – 10364
17.790 Groner, F. S., 1927	10365 – 10367
17.791 Groner, F. S., 1928	10368 – 10373
17.792 Groner, F. S., 1929	10378 – 10385
17.793 Grubbs, Howard (T. C. U.), 1949	10386 – 10385
17.794 H – Misc.	10386 – 10391
17.795 H – Misc., 1925	10392 – 10393
17.796 H – Misc., 1927	10394 – 10439
17.797 H – Misc., 1928	10440 – 10579
17.798 H – Misc., 1929	10580 – 10666

### Box 18

18.799 H – Misc., 1930
18.800 H – Misc., 1931
18.801 H – Misc., 1932
18.802 H – Misc., 1933
18.803 H – Misc., 1934
18.804 H – Misc., 1935
18.805 H – Misc., 1939
18.806 H – Misc., 1940
18.807 H – Misc., 1943
18.808 H – Misc., 1944
18.809 H – Misc., 1945
18.810 H – Misc., 1946
18.811 H – Misc., 1947
18.812 H – Misc., 1948
18.813 H – Misc., 1949
18.814 H – Misc., 1950
18.815 H – Misc., 1951
18.816 H – Misc., 1952
18.817 Hadley, Bill, 1935
18.818 Hadlock, Charles A., 1944
18.819 Haldeman, I. M (Why I Am Opposed

### Items

10667 – 10759
10760 – 10762
10763 – 10773
10774 – 10777
10778 – 10876
10877 – 10944
10945 – 10946
10947
10948 – 10953
10954 – 11011
11012 – 11019
11017 – 11021
11022 – 11037
11038 – 11109
11110 – 11179
11180 – 11230
11231 – 11296
11297 – 11337
11338 – 11342
11343 – 11346

to the Interchurch World Movement), 1944	11347
18.820 Hall, Jack, 1952	11348 – 11352
18.821 Hall, I. M., 1950	11353 – 11359
18.822 Hall, W. E., 1950	11360 – 11364
18.823 Hall, W. T., 1929	11365 – 11368
18.824 Harn, M. F., 1927	11369 – 11398
18.825 Ham, M. F., 1928	11399 – 11424
18.826 Ham, M. F., 1929	11425 – 11442
18.827 Ham, M. F., 1930	11443 – 11453
18.828 Ham, M. F., 1935	11454 – 11472
18.829 Ham, Mordecai, 1940	11473 – 11476
18.830 Ham, M. F., 1944	11477 – 11480
18.831 Ham, Mordecai F., 1951	11481 – 11498

### **Box 19**

19.832 Hamilton, Harry, 1944	11499 – 11522
19.833 Hamilton, Harry, 1948	11523 – 11542
19.834 Hamilton, Harry, 1949	11543 – 11547
19.835 Hamilton, Harry, 1951	11548 – 11552
19.836 Hamilton, J.A., 1933	11553 – 11560
19.837 Hamilton, Nathan, 1948	11561 – 11564
19.838 Hamilton, Nathan, 1949	11565 – 11568
19.839 Hamilton, Nathan, 1950	11569 – 11576
19.840 Hamilton, Nathan, 1951	11577 – 11597
19.841 Hankins, Joe H., 1929	11598 – 11602
19.842 Hankins, Joe H., 1930	11603 – 11612
19.843 Hankins, Joe H., 1931	11613 – 11615
19.844 Harder, Mat S., 1930	11616 – 11619
19.845 Hardy, W. E., 1944	11620 – 11623
19.846 Hardy, W. E., 1948	11624 – 11630
19.847 Hardy, W. E., 1950	11631 – 11642
19.848 Hardy, W. E., 1951	11643 – 11658
19.849 Harkness, Robert, 1928	11659 – 11666
19.850 Harkrider, Ruth, 1948	11667 – 11670
19.851 Harper, J. W., 1935	11671 – 11674
19.852 Harrison, Wm. K., 1948	11675 – 11678
19.853 Hartwell, Jane, 1928	11679 – 11684
19.854 Hartwell, Jane, 1929	11685 – 11693
19.855 Harvey, Ralph E., 1928	11694 – 11697
19.856 Harvey, W. B., 1949	11698 – 11705
19.857 Hathaway, Jack, 1934	11706 – 11717
19.858 Hawkins, M.E., 1944	11718 – 11725
19.859 Hawkins, Paul, 1948	11726 – 11733
19.860 Hawkins, Wm. F., 1928	11734 – 11738
19.861 Hayes, Kenneth, 1950	11739 – 11744
19.862 Hayes, F. M., 1930	11745 – 11749

### **Items**



19.863 Hayles, Jerry, 1950	11750 – 11755
19.864 Head, Walter Lee, 1935	11756 – 11770
19.865 Head, Walter W., 1948	11771 – 11776
19.866 Heflin, J. Thomas, 1928	11777 – 11783
19.867 Henniger, Harold, 1948	11784 – 11788
19.868 Henniger, Harold, 1949	11789 – 11793
19.869 Henniger, Harold, 1950	11794 – 11800
19.870 Henniger, Harold, 1952	11801 – 11804
19.871 Herschberger, H. H., 1928	11805 – 11808
19.872 Hewitt, W. A., 1928	11809 – 11817
19.873 Hibbitt, Bruce, 1934	11818 – 11821
19.874 Hickey, Scott, 1929	11822 – 11825
19.875 Hiatt, Hugh L., 1929	11826 – 11830
19.876 Hiatt, Hugh L., 1930	11831 – 11835
19.877 Hildebrand, Ira A., 1934	11836 – 11841
19.878 Hill, Fred, 1934	11842 – 11845
19.879 Hill, Joe, 1935	11846 – 11851
19.880 Rill, Ted, 1950	11852 – 11855
19.881 Hill, T. Wesley, 1944	11856 – 11865
19.882 Hill, T. Wesley, 1948	11866 – 11873
19.883 Hill, T. Wesley, 1949	11874 – 11878
19.884 Hill, T. Wesley, 1950	11879 – 11892
19.885 Hillard, B. H., 1944	11893 – 11923
19.886 Hillard, B. H., 1947	11924 – 11943
19.887 Hillard, B. H., 1948	11944 – 11965
19.888 Hillard, B. H., 1949	11966 – 11992
19.889 Hillard, B. H., 1950	11993 – 12032

**Box 20**

20.890 Hillard, B. H., 1951
20.891 Hillard, B. H., 1952
20.892 Hines, J. L., 1948
20.893 Hinesley, W. Fred, 1949
20.894 Hinkle, M. B., 1935
20.895 Hinson, A. A., 1934
20.896 Hitt, Harold A., 1928
20.897 Hitt, Harold A., 1929
20.898 Hitt, Harold A., 1930
20.899 Hodges, G. E., 1948
20.900 Hodges, G. E., 1949
20.901 Hodges, G. E., 1950
20.902 Hodges, Olson, 1948
20.903 Hodges, Olson, 1950
20.904 Hofmeister, T. M., 1928
20.905 Hogarth, Margaret E. Estate, 1944

**Items**

12033 – 12112
12113 – 12119
12120 – 12127
12128 – 12133
12134 – 12138
12139 – 12142
12143 – 12153
12154 – 12159
12160 – 12164
12165 – 12185
12186 – 12221
12222 – 12228
12229 – 12232
12233 – 12239
12240 – 12251
12252 – 12256

20.906 Holder, Ray, 1929	12257 – 12263
20.907 Holland, Fred, 1934	12264 – 12267
20.908 Hollifield, Cliff, 1935	12268 – 12285
20.909 Home Abstract Co., 1930	12286 – 122913
20.910 Hoodge, Frank (Phillipine Miss.), 1948	12292 – 12296
20.911 Hoodge, Frank, 1949	12297 – 12308
20.912 Hoodge, Frank, 1950	12309 – 12314
20.913 Hooker, M. H., 1948	12315 – 12318
20.914 Hooper, George H., 1929	12319 – 12322
20.915 Hoover, Herbert, 1928	12323 – 12327
20.916 Hoover, Herbert, 1929	12328 – 12334
20.917 Hoover, Herbert, 1930	12335 – 12339
20.918 Hoover, J. Edgar, 1948	12340 – 12342
20.919 Hoover, J. Edgar, 1949	12343 – 12344
20.920 Hopper, Doyle, 1948	12345 – 12347
20.921 Horde, Sam, 1927	12348 – 12360
20.922 Horde, Sam, 1928	12361 – 12365
20.923 Horse Racing, 1947	12366 – 12369
20.924 Horton, T. C., 1928	12370 – 12371
20.925 Horton, T. C., 1929	12372 – 12382
20.926 Horton, T. C., 1930	12383 – 12390
20.927 Houghton, Will H., 1935	12391 – 12397
20.928 House, Raymond, 1935	12398 – 12402
20.929 House, Wade H., 1929	12403 – 12406
20.930 House, Wade H., 1930	12407 – 12412
20.931 Howard, Larkin, 1949	12413 – 12416
20.932 Howe, Gene, 1930	12417 – 12420
20.933 Huddleston, Hill, 1929	12421 – 12423
20.934 Hufstader, W. F., 1950	12424 – 12427
20.935 Hull, Cordell (Credentials), 1939	12428
20.936 Hull, Cordell, 1940	12429 – 12435
20.937 Hull, Marion McH., 1934	12436 – 12439
20.938 Humphrey, D. E., 1930	12440 – 12445
20.939 Humphrey, J. B., 1928	12446 – 12449
20.940 Humphrey, J. B., 1929	12450 – 12455
20.941 Hunter, J. L., 1929	12456 – 12461
20.942 Hunter, J. L., 1930	12462 – 12474
20.943 Hunter, John, 1950	12475 – 12479
20.944 Hunter, Wm. A., 1928	12480 – 12482
20.945 Hutchinson, B. E., 1942	12483 – 12488
20.946 Hutchinson, B. E., 1943	12489 – 12496
20.947 Hutchinson, B.E., 1944	12497 – 12554
20.948 Hutchinson, B.E., 1948	12555 – 12639

**Box 21**

21.949 Hutchinson, B.E., 1949

**Items**

12640 – 12697

21.950 Hutchinson, B.E., 1950	12698 – 12738
21.951 Hutchinson, B.E., 1951	12739 – 12788
21.952 Hutchinson, B.E., 1952	12789 – 12827
21.953 Hyer, Julien C., 1929	12828 – 12835
21.954 I – Miscellaneous, 1935	12836
21.955 I – Miscellaneous, 1944	12837 – 12838
21.956 I – Miscellaneous, 1945	12839
21.957 I – Miscellaneous, 1946	12840 – 12841
21.958 I – Miscellaneous, 1947	12842 – 12846
21.959 I – Miscellaneous, 1948	12847 – 12848
21.960 I – Miscellaneous, 1949	12849 – 12850
21.961 I – Miscellaneous, 1950	12851 – 12854
21.962 I – Miscellaneous, 1951	12855 – 12861
21.963 I – Miscellaneous, 1952	12862
21.964 Igou, J. B., 1949	12863 – 12865
21.965 Lamboden, Wayne, 1947	12866 – 12870
21.966 Lamboden, Wayne, 1949	12871 – 12874
21.967 Income Tax, 1943	12875
21.968 Income Tax (J.F.N), 1950	12876 – 12877
21.969 Income Tax (J.F.N.), 1951	12878 – 12881
21.970 Indianapolis, 1949	12882 – 12931
21.971 Ingle, R. D. (Bob), 1944	12932 – 12951
21.972 Ingle, R. D., 1947	12952 – 12977
21.973 Ingle, R. D., 1948	12978 – 13003
21.974 Ingle, R.D., 1949	13004 – 13018
21.975 Ingle, R. D., 1950	13019 – 13074
21.976 Ingle, R.D., 1951	13075 – 13160
21.977 Ingle, R. D., 1952	13161 – 13195
21.978 Ingram, Henry, 1947	13196 – 13199
21.979 ICCC Tour. (Misc.), 1950	13200 – 13236
21.980 ICCC Tour (Ruth Trato), 1950	13237 – 13280

**Box 22**

22.981 International News Service, 1947	13281 – 13287
22.982 International News Service, 1948	13288 – 13305
22.983 Irby, Ebno, 1948	13306 – 13309
22.984 Irvine, Ralph, 1952	13310 – 13313
22.985 J – Miscellaneous, 1926	13314 – 13318
22.986 J – Miscellaneous, 1932	13319
22.987 J – Miscellaneous, 1933	13320
22.988 J – Miscellaneous, 1934	13321
22.989 J – Miscellaneous, 1940	13322
22.990 J – Miscellaneous, 1941	13323
22.991 J – Miscellaneous, 1944	13324 – 13342
22.992 J – Miscellaneous, 1946	13343
22.993 J – Miscellaneous, 1947	13344 – 13381

**Items**

22.994 J – Miscellaneous, 1948	13382 – 13412
22.995 J – Miscellaneous, 1949	13413 – 13452
22.996 J – Miscellaneous, 1950	13453 – 13475
22.997 J – Miscellaneous, 1951	13476 – 13488
22.998 J – Miscellaneous, 1952	13489 – 13498
22.999 Jackson, Mrs. Drue, 1944	13499 – 13503
22.1000 Jackson, Ralph, 1948	13504 – 13508
22.1001 Jackson, Ralph, 1949	13509 – 13513
22.1002 Jacksonville Paper, 1948	13514 – 13517
22.1003 Japan, 1933	13518 – 13526
22.1004 Japanese (J.F.N. attitude toward), 1944	13527
22.1005 Jefferson Life Ins. Co., 1948	13528 – 13531
22.1006 Jester, Beauford, 1947	13532 – 13535
22.1007 Jester, Beauford H., 1949	13536 – 13538
22.1008 Jews 13539 – 13543	
22.1009 Jews, 1947	13544 – 13552
22.1010 Jews, 1948	13553 – 13605
22.1011 Jews, 1950	13606 – 13620
22.1012 Johnson, Ben D., 1944	13621 – 13626
22.1013 Johnson, Ben D., 1947	13627 – 13632
22.1014 Johnson, Ben D., 1948	13633 – 13636
22.1015 Johnson, Ben D., 1950	13637 – 13641
22.1016 Johnson, Ben D., 1951	13642 – 13655
22.1017 Johnson, J. Lee, 1951	13656 – 13659
22.1018 Johnson, Lyndon, 1948	13660 – 13666
22.1018. Johnson, Lyndon, 1950	13667 – 13671
22.1019 Johnson, Lyndon, 1951	13672 – 13678
22.1020 Johnston, “Parson” Jack, 1947	13679 – 13695
22.1021 Johnson, Jack, 1948	13696 – 13715
22.1022 Jones, Bob, 1948	13716 – 13720
22.1023 Jones, Bob, 1949	13721 – 13727
22.1024 Jones, Bob, 1950	13728 – 13738
22.1025 Jones, Jesse, 1951	13739 – 13746
22.1026 Jones, Sarah, 1948	13747 – 13750
22.1027 Joseph, Mrs. Marie, 1951	13751 – 13754
22.1028 Jostes, R. C., 1950	13755 – 13758
22.1028 Jurney, Fred, 1947	13759 – 13763
22.1029 Justice, R. W., 1944	13764 – 13773
22.1030 Justice, R. W., 1947	13774 – 13776
22.1031 Justice, R. W., 1948	13777 – 1378
22.1032 K – Miscellaneous, 1928	13787
22.1033 K – Miscellaneous, 1931	13788 – 13809
22.1034 K – Miscellaneous, 1932	13810 – 13837
22.1035 K – Miscellaneous, 1933	13838 – 13870
22.1036 K – Miscellaneous, 1938	13871 – 13874

**Box 23**

	<b>Items</b>
23.1037 K –Miscellaneous, 1939	13875
23.1038 K – Miscellaneous, 1940	13876 – 13878
23.1039 K – Miscellaneous, 1941	13879
23.1040 K – Miscellaneous, 1942	13880
23.1041 K – Miscellaneous, 1943	13881
23.1042 K – Miscellaneous, 1944	13882 – 13892
23.1043 K – Miscellaneous, 1945	13893 – 13898
23.1044 K – Miscellaneous, 1946	13899 – 13900
23.1045 K – Miscellaneous, 1947	13901 –13928
23.1046 K – Miscellaneous, 1948	13929 – 19350
23.1047 K – Miscellaneous, 1949	13951 – 13974
23.1048 K – Miscellaneous, 1950	13975 – 13983
23.1049 K – Miscellaneous, 1951	13984 – 14013
23.1050 K – Miscellaneous, 1952	14014 – 14032
23.1051 Kansas City Life Ins. Co., 1930	14033 – 14057
23.1052 Kansas City Life Ins. Co., 1931	14058 – 14074
23.1053 Kansas City Life Ins. Co., 1932	14075 – 14100
23.1054 Kansas City Life Ins. Co., 1933	14101 – 14111
23.1055 Kansas City Life Ins. Co., 1934	14112 – 14154
23.1056 Kansas City Life Ins. Co., 1935	14155 – 14184
23.1057 Kansas City Life Ins. Co., 1936	14185 – 14221
23.1058 Kansas City Life Ins. Co., 1937	14222 – 14235
23.1059 Kansas City Life Ins. Co., 1938	14236 – 14240
23.1060 Kansas City Life Ins. Co., 1939	14241 – 14246
23.1061 Kansas City Life Ins. Co., 1940	14247 – 14261
23.1062 Kay Drug Company, 1949	14262 – 14271
23.1063 KCUL, 1949	14272 – 14273
23.1064 Keeton, Harry, 1949	14274 – 14277
23.1065 Keith, S. E., 1948	14278 – 14281
23.1066 Keller, K. T., 1947	14282 – 14298
23.1067 Keller, K. T., 1948	14299 – 14315
23.1068 Keller, K. T., 1949	14316 – 14325
23.1069 Keller, K. T., 1950	14326 – 14330
23.1070 Keller, K. T., 1951	14331 – 14338
23.1071 Kelly, Ben H. (Roy Angel), 1933	14339 – 14385
23.1072 Kelly, Keith, 1949	14386 – 14396
23.1073 Kelly, Keith, 1951	14397 – 14403
23.1074 Kemp, R. A., 1933	14404 – 14406
23.1075 Kemp, Roy A., 1944	14407 – 14414
23.1076 Kemp, Roy, 1949	14415 – 14419
23.1077 Kemp, Roy A., 1950	14420 – 14423
23.1078 Ketcham, F. O.Mortgage Co., 1930	14424 – 14433
23.1079 Ketcham, F. O.Mortgage Co., 1931	14434 – 14443
23.1080 Ketcham, F. O.Mortgage Co., 1932	14444 – 14450
23.1081 Ketcham, F. O.Mortgage Co., 1933	14451 – 14510

23.1082 Ketcham, F. O.Mortgage Co., 1934	14511 – 14543
23.1083 Ketcham, F. O.Mortgage Co., 1935	14544 – 14559
23.1084 Ketcham, R. T., 1940	14560 – 14566
23.1085 Ketcham, R. T., 1944	14567 – 14572
23.1086 Kercheval, Robert D., 1931	14573 – 14576
23.1087 Key, J. W., 1932	14577 – 14582
23.1088 KFJZ, 1949	14583 – 14599

**Box 24**

24.1089 Killingsworth, H. Kay, 1950	<b>Items</b> 14600 – 14604
24.1090 King, Frank H., 1947	14605 – 14612
24.1091 King, Frank, 1949	14613 – 14616
24.1092 King, Roland, 1948	14617 – 14626
24.1093 Kirkland, A. J., 1931	14627 – 14629
24.1094 Kirkland, A. J., 1932	14630 – 14632
24.1095 Knickerbocker, Hubert D., 1947	14633 – 14637
24.1096 Knickerbocker, Hubert D., 1949	14638 – 14646
24.1097 Know, Frank, 1944	14647 – 14652
24.1098 Kruse, Stan, 1950	14653 – 14658
24.1099 Ku Klux Klan, 1928	14659 – 14660
24.1100 Ku Klux Klan, 1947	14661 – 14671
24.1101 L – Miscellaneous, 1926	14672
24.1102 L – Miscellaneous, 1928	14673
24.1103 L – Miscellaneous, 1931	14674 – 14711
24.1104 L – Miscellaneous, 1932	14712 – 14774
24.1105 L – Miscellaneous, 1933	14776 – 14821
24.1106 L – Miscellaneous, 1934	14822 – 14823
24.1107 L – Miscellaneous, 1940	14824 – 14825
24.1108 L – Miscellaneous, 1943	14826
24.1109 L – Miscellaneous, 1944	14827 – 14867
24.1110 L – Miscellaneous, 1945	14868 – 14869
24.1111 L – Miscellaneous, 1946	14870 – 14872
24.1112 L – Miscellaneous, 1947	14873 – 14877
24.1113 L – Miscellaneous, 1948	14878 – 14911
24.1114 L – Miscellaneous, 1949	14912 – 14945
24.1115 L – Miscellaneous, 1950	14946 – 14983
24.1116 L – Miscellaneous, 1951	14984 – 15020
24.1117 L – Miscellaneous, 1952	15021 – 15036
24.1118 Labor, 1932	15037 – 15038
24.1119 Labor, 1945	15039 – 15040
24.1120 Lackland, Scott B., 1948	15041 – 15056
24.1121 Lakin, B. R., 1950	15057 – 15073
24.1122 Lakin, B. R., 1951	15074 – 15081
24.1123 Lamberth, W., 1933	15082 – 15083
24.1124 Lanham Fritz, 1933	15084 – 15088
24.1125 Laurence, J. Frank, 1949	15089 – 15091

24.1126 Laurence, J. Frank, 1950	15092 – 15102
24.1127 Laurence, J. B., Home Mission Board, 1952	15103
24.1128 Leaman, Mel G., 1931	15104 – 15112
24.1129 Leaman, Mel G., 1932	15113 – 15118
24.1130 LeBaron, Earle (Catholic Priest), 1933	15119 – 15120
24.1131 Ledge – Enquirer Ste (B. H. Chappell, Atty. for same), 1948	15121 – 15136
24.1132 Ledger – Enquirer Ste (clips), 1948	15137 – 15144
24.1133 Ledger – Enquirer Ste, (F. W. New, Atty. for J.F.N.), 1948	15145 – 1525924.
24.1134 Ledger – Enquirer Suit (witness notices), 1948	15260 – 15301

**Box 25**

**Items**

25.1135 Ledger – Enquirer Suit (D. B., South, Material Witness for Defendant), 1948	15302 – 15303
25.1136 Ledger – Enquirer Suit (Retraction), 1948	15304 – 15308
25.1137 Ledger – Enquirer Suit, 1948 (Parson Jack Johnson)	15309 – 15313
25.1138 Lee, James W. II, 1948	15314 – 15320
25.1139 Leghorn, R. L., 1950	15321 – 15327
25.1140 Leon, Perry, 1952	15328 – 15333
25.1141 Leonard's Dept. Store, 1949	15334 – 15397
25.1142 Leonard, Marvin, 1949	15398 – 15400
25.1143 Lewis, Norman, 1948	15401 – 15409
25.1144 Lewis, w. G., 1948	15410 – 15421
25.1145 Life Magazine, 1949	15422 – 15426
25.1146 Lipps, Dr. Paul K., 1931	15427 – 15432
25.1147 Lists 15433 – 15465	
25.1148 Lists (Church Officers), 1944	15465 – 15471
25.1149 Lists, 1946	15472
25.1150 Lists, 1947	15473 – 15502
25.1151 Lists, 1948	15503 – 15511
25.1152 Lists, 1949	15512 – 15514
25.1153 Lists, 1950	15515 – 15522
25.1154 Livingston, J, R., 1950	15523 – 15526
25.1155 Logan, Samuel S., 1951	15527 – 15535
25.1156 Lone Star Broadcasting Co., 1927	15536
25.1157 Long, Gov. Hughey, 1932	15537
25.1158 Long, Huey P., 1933	15538 – 15541
25.1159 Long, James, 1950	15542 – 15545
25.1160 Long, Tam, 1944	15546 – 15555
25.1161 Long, Wm. P., 1950	15556 – 15564
25.1162 Long, Wm. P., 1951	15565 – 15571
25.1162 Los Angeles Engagements, 1949	15572 – 15642

25.1163 Loughheed, Don, 1950	15643 – 15661
25.1164 Loughheed, Don, 1951	15662 – 15671
25.1165 Lovelace, T. Theo., 1933	15672 – 15674
25.1166 Lucas, Robert, 1930	15675 – 15682
25.1167 Lucas, Robert, 1931	15683 – 15687
25.1168 Lucas, Wingate, 1949	15688 – 15700
25.1169 Lucas, Wingate, 1950	15701 – 15708
25.1170 Lucas, Wingate, 1951	15709 – 15717
25.1171 Lupo, Paul, 1944	15718 – 15778
25.1172 Lupo, Paul, 1947	15779 – 15794
25.1173 Lupo, Paul, 1948	15795 – 15811
25.1174 Lupo, Paul, 1949	15812 – 15813
25.1175 Lyon, Oscar B., 1931	15814 – 15817
25.1176 M – Miscellaneous	15818 – 15820
25.1177 M – Miscellaneous, 1927	15821
25.1178 M – Miscellaneous, 1928	15822
25.1179 M – Miscellaneous, 1929	15823 – 15824
25.1180 M – Miscellaneous, 1930	15825 – 15827

**Box 26**

26.1181 M – Miscellaneous, 1931	15828 – 15878
26.1182 M to Mi – Misc., 1932	15879 – 15932
26.1183 Mi to Mu – Misc., 1932	15933 – 16077
26.1185 M – Miscellaneous, 1934	16078 – 16083
26.1186 M – Miscellaneous, 1935	16084 – 16092
26.1187 M – Miscellaneous, 1939	16093
26.1188 M – Miscellaneous, 1940	16094 – 16096
26.1189 M – Miscellaneous, 1944	16101 – 16141
26.1191 M – Miscellaneous, 1947	16141 – 16147
26.1192 M – Miscellaneous, 1948	16148 – 16219
26.1193 M – Miscellaneous, 1941	16220 – 16278
26.1194 M – Miscellaneous, 1950	16279 – 16329
26.1195 M – Miscellaneous, 1951	16330 – 16372
26.1196 M – Miscellaneous, 1952	16373 – 16393
26.1197 McArthur, General Douglas, 1951	16394 – 16397
26.1198 Machen, J. Gresham, 1933	16398 – 16402
26.1199 Maddox, Webb, 1949	16403 – 16406
26.1200 Majors, W. O., 1949	16407 – 16417
26.1201 Malone, Tam, 1952	16418 – 16435
26.1202 Mancill, R. W., 1948	16436 – 16439
26.1203 Manney, E. E., 1951	16440 – 16446
26.1204 Manney, E. E., 1952	16447 – 16459
26.1205 Manney Printing Co., 1947	16460 – 16465
26.1206 Manney Printing Co., 1949	16466
26.1207 Manning, Jack, 1948	16467 – 16470
26.1208 Martin, H. R., 1933	16471 – 16481

**Items**



26.1209 Martin, T. T., 1932	16482 – 16499
26.1210 Martin, T. T., 1933	16500 – 16503
26.1211 Masonic Lodge (Mt. Calm, Texas), 1932	16504
26.1212 Mass. Mutual Life Ins. Co., 1923	16505 – 16506
26.1213 Mass. Mutual Life Ins. Co., 1924	16507 – 16508
26.1214 Mass. Mutual Life Ins. Co., 1925	16509 – 16510
26.1215 Mass. Mutual Life Ins. Co., 1926	16511 – 16512
26.1216 Mass. Mutual Life Ins. Co., 1928	16513 – 16530
26.1217 Mass. Mutual Life Ins. Co., 1929	16531 – 16539

**Box 27**

27.1218 Mass Mutual Life Ins. Co., 1931	16540 – 16550
27.1219 Mass. Mutual Life Ins. Co., 1932	16551 – 16571
27.1220 Mass. Mutual Life Ins. Co., 1933	16572 – 16580
27.1221 Mass. Mutual Life Ins. Co., 1934	16581 – 16597
27.1222 Mass. Mutual Life Ins. Co., 1935	16598 – 16615
27.1223 Mass. Mutual Life Ins. Co., 1936	16616 – 16621
27.1224 Mass. Mutual Life Ins. Co., 1937	16622 – 16625
27.1225 Masters, T. H., 1944	16626 – 16630
27.1226 Masters, T. H., 1950	16631 – 16643
27.1227 Masters, Victor I., 1928, 1931	16644 – 16649
27.1228 Masters, Victor I., 1932	16650 – 16660
27.1229 Masters, Victor I., 1948	16661 – 16683
27.1230 Masters, Victor I., 1949	16684 – 16696
27.1231 Mattison, Florence, 1944	16697 – 16704
27.1232 Mattison, Florence, 1950	16705 – 16707
27.1233 Maxwell, A. G., 1931	16708 – 16713
27.1234 Maxwell, A. G., 1933	16714 – 16719
27.1235 Meadows, G. R., 1931	16720 – 16724
27.1236 Macklin, J. G. 1949	16725 – 16728
27.1237 Medical Society, 1932 (Tarrant Co)	16729
27.1238 Meiss, W. G., 1944	16730 – 16736
27.1239 Merriweather, A. R., 1950	16737 – 16740
27.1240 Methodists	16741 – 16742
27.1241 Mexico, 1950	16743 – 16760
27.1242 Mickle, Joe J., 1933	16761 – 16764
27.1243 Miller, Delbert, 1950	16765 – 16771
27.1244 Miller, Delbert, 1951	16772 – 16774
27.1245 Miller, Don, 1944	16775 – 16780
27.1246 Miller, Jerry, 1944	16781
27.1247 Miller, Jerry, 1948	16782 – 16785
27.1248 Mills, Gamer, 1949	16786 – 16788
27.1249 Milton, John W., 1932	16789 – 16790
27.1250 Milton, John, 1933	16791 – 16796
27.1251 Mims, Joe, 1933	16797 – 16805
27.1252 Ministerial Unemployment, 1931	16806 – 16821

**Items**

27.1253 Ministerial Unemployment, 1932	16822 – 16825
27.1254 Ministerial Unemployment, 1933	16826 – 16831
27.1255 Missionaries, 1948	16832 – 16888
27.1256 Missions (Southern Baptist), 1931	16889 – 16893
27.1257 Missions (Southern Baptist), 1932	16894 – 16901
27.1258 Missions, 1933	16902 – 16905
27.1259 Missions (Foreign), 1934	16906 – 16908
27.1260 Missouri State Life Ins. Co., 1930	16909
27.1261 Montgomery, Robert B., 1950	16910 – 16920
27.1262 Montgomery, Bob, 1951	16921 – 16923
27.1263 Montgomery, Robert, 1952	16924 – 16928
27.1264 Moody Bible School, 1933	16929 – 16933
27.1265 Moore, Frank, 1949	16934 – 16937
27.1266 Moore, Karl H., 1931	16938 – 16943
27.1267 Morgan, Paul, 1949	16944 – 16947
27.1268 Morgan, Paul, 1950	16948 – 16955
27.1269 Morris, Brooks, 1931	16956 – 16969
27.1270 Morris, G. G., 1932	16970 – 16982
27.1271 Morris, Sam, 1933	16983 – 16995
27.1272 Morris, Sam, 1948	16996 – 17006
27.1273 Moses, A. B., 1932	17007 – 17010
27.1274 Moses, Dayton, 1944	17011 – 17016
27.1275 Moss, S. E., 1932	17017 – 17021
27.1276 Mother's Day Address (J.F.N.)	17022
27.1277 Munroe, E. A., 1948	17023 – 17026
27.1278 Murder Trial, 1947	17027 – 17030
27.1279 Muse, A. D., 1932	17031 – 17037
27.1280 Mussolini, Benito, 1931	17038
27.1281 Mutual Life Insurance Co., 1930	17039 – 17053
27.1282 Mc –Miscellaneous, 1930	17054 – 17055
27.1283Mc –Miscellaneous, 1931	17056 – 17081

**Box 28**

28.1284 Mc – Miscellaneous, 1932	17082 – 17129
28.1285 Mc – Miscellaneous, 1933	17130 – 17144
28.1286 Mc – Miscellaneous, 1934	17145 – 17147
28.1287 Mc – Miscellaneous, 1935	17148 – 17150
28.1288 Mc – Miscellaneous, 1943	17151 – 17153
28.1289 Mc – Miscellaneous, 1944	17154 – 17164
28.1290 Mc – Miscellaneous, 1946	17165 – 17166
28.1291 Mc – Miscellaneous, 1947	17167 – 17196
28.1292 Mc – Miscellaneous, 1948	17197 – 17235
28.1293 Mc – Miscellaneous, 1949	17236
28.1294 Mc – Miscellaneous, 1950	17237 – 17277
28.1295 Mc – Miscellaneous, 1951	17278 – 17295
28.1296 Mc – Miscellaneous, 1952	17296

**Items**

28.1297 McAdams, John Q., 1948	17297 – 17300
28.1298 McBeath, John, 1949	17301 – 17304
28.1299 McBeath, John, 1950	17305 – 17311
28.1300 McCallum, Roy, 1949	17312 – 17316
28.1301 McCallum, Roy, 1951	17317 – 17321
28.1302 McCaul, Robert, 1949	17322 – 17325
28.1303 McClanahan, H.B., 1949	17326 – 17329
28.1304 McClaren, Mrs. James W., 1949	17330 – 17334
28.1305 McClung, J. F., 1931	17335 – 17339
28.1306 McClung, W. C., 1931	17340 – 17343
28.1307 McCord, T. T., 1931	17344 – 17362
28.1308 McCoy, Ralph G., 1950	17363 – 17376
28.1309 McDaniel, Wilbur, 1931	17377 – 17385
28.1310 McDaniel, Wilbur J., 1932	17386 – 17390
28.1311 McDougal, Porter, 1949	17391 – 17398
28.1312 McDowell, Charles F., 1944	17399 – 17404
28.1313 McDowell, Charles, 1947	17405 – 17411
28.1314 McDowell, Charles, 1950	17412 – 17417
28.1315 McElfresh, Gerald, 1947	17418 – 17427
28.1316 McElfresh, Gerald R., 1948	17428 – 17431
28.1317 McElfresh, Gerald, 1949	17432 – 17437
28.1318 McGill, Ralph, 1947	17438 – 17441
28.1319 McIntire, Carl, 1950	17442 – 17458
28.1320 McIntire, Carl, 1951	17459 – 17483
28.1321 McIntire, Carl, 1952	17484 – 17496
28.1322 McKee, J. Edwin, 1948	17497 – 17499
28.1323 McKee, J. Edwin, 1950	17500 – 17506
28.1324 N – Miscellaneous	17507 – 17514
28.1325 N – Miscellaneous, 1928	17515 – 17516
28.1327 N – Miscellaneous, 1930	17517 – 17518
28.1328 N – Miscellaneous, 1931	17519 – 17529
28.1329 N – Miscellaneous, 1932	17530 – 17561
28.1330 N – Miscellaneous, 1933	17562 – 17589
28.1331 N – Miscellaneous, 1934	17590 – 17591
28.1332 N – Miscellaneous, 1935	17592
28.1333 N – Miscellaneous, 1938	17593
28.1334 N – Miscellaneous, 1944	17594 – 17607
28.1335 N – Miscellaneous, 1945	17608 – 17612

**Box 29**

29.1336 N – Miscellaneous, 1947
29.1337 N – Miscellaneous, 1948
29.1338 N – Miscellaneous, 1949
29.1339 N – Miscellaneous, 1950
29.1340 N – Miscellaneous, 1951
29.1341 N – Miscellaneous, 1952

**Items**

17613 – 17640
17641 – 17657
17658 – 17669
17670 – 17690
17691 – 17705
17706 – 17750

29.1342 Nails, W. W., 1944	17751 – 17754
29.1343 Nall, G. A., 1932	17755 – 17758
29.1344 Nall, G. A., 1933	17759 – 17765
29.1345 Nation, Mr. and Mrs. E., 1949	17766 – 17768
29.1346 Nation, Ellis, 1951	17769 – 17772
29.1347 Neff, Pat M., 1932	17773 – 17780
29.1348 Neff, Pat M., 1933	17781 – 17783
29.1349 Neff, Pat, 1947	17784 – 17786
29.1350 Neville, Jack L., 1931	17787 – 17838
29.1351 Neville, Jack L., 1932	17839 – 17846
29.1352 Neville, Jack L., 1933	17847 – 17850
29.1353 New, F. W., 1949	17851 – 17859
29.1354 Newton, Louie, 1947	17860 – 18024
29.1355 Newton, Louie D., 1948	18025 – 18058
29.1356 Newton, Louie, 1949	18059 – 18064
29.1357 Newton, Walter, 1931	18065 – 18070
29.1358 Newton, Walter, 1932	18071 – 18079
29.1359 Newspaper Ads, 1948	18080 – 18159
29.1360 Nichols, T. C., 1931	18160 – 18168
29.1361 Ninmo, C. O., 1951	18169 – 18176
29.1362 Nisbett, Hattie, 1948	18177 – 18179
29.1363 Nitschlike, Winnie R., 1931	18180 – 18186
29.1364 Nixon, Charles, 1933	18187 – 18192
29.1365 Norris – Brewer Debate, 1944	18193 – 18200

**Box 30**

30.1366 Norris, George, 1934	18201 – 18202
30.1367 Norris, George, 1939	18203 – 18221
30.1368 Norris, George, 1940	18222 – 18257
30.1369 Norris, George, 1941	18258 – 18280
30.1370 Norris, George, 1942	18281 – 18366
30.1371 Norris, George, 1944	18367 – 18385
30.1372 Norris, George (J.F.N.Corr. split with J.F.N.), 1945	18386 – 18437
30.1373 Norris, George (File 2, J.F.N.), 1945	18438 – 18446
30.1374 Norris, George, 1947	18447
30.1375 Norris, George, 1948	18448 – 18466
30.1376 Norris Hines Debate (corresp), 1944	18467 – 18502
30.1377 Norris – Hines Debate, 1945	18503 – 18514
30.1378 Norris – Hines Debate, 1946	18515 – 18583
30.1379 Norris, J. Frank	18584 – 18609
30.1380 Norris, T. Frank	18610 – 18614
30.1381 Norris: J. Frank, 1939	18615 – 18617
30.1382 Norris, J. Frank (Income Tax), 1942	18618 – 18619
30.1383 Norris, J. Frank, 1945	18620 – 18621
30.1384 Norris, J. Frank Estate, 1945	18622 – 18623

**Items**

30.1385 Norris, J. Frank (sketch of life), 1946	18624
30.1386 Norris, J. Frank, 1948	18625 – 18647
30.1387 Norris, J. Frank, 1949	18648 – 18662
30.1388 Norris, J. Frank, 1950	18663 – 18668
30.1389 Norris, J. Frank, 1952	18669 – 18673
30.1390 Norris, Dr. J. Frank (Death), 1952	18674 – 18689
30.1391 Norris, Dr. J. Frank, 1927	18690
30.1392 Norris, Mrs. J. Frank, 1947	18691 – 18724
30.1393 Norris, Mrs. J. Frank, 1949	18725 – 18726

### **Box 31**

31.1394 Norris, Mrs. J. Frank, 1951	18727 – 18733
31.1395 Norris, Mrs. J. Frank, 1952	18734 – 18736
31.1396 Norris, J. Frank Jr., 1944	18737 – 18767
31.1397 Norris, J. Frank Jr. (G. N. split with J.F.N.), 1945	18768 – 18823
31.1398 Norris, J. Frank, Jr., 1947	18824 – 18825
31.1399 Norris, J. Frank Jr, 1949	18901 – 18978
31.1401 Norris, J. Frank Jr., 1950	18979 – 19018
31.1402 Norris, J. Frank Jr., 1951	19019 – 19027
31.1403 Norris, Clyde & Jim Gaddy, 1932	19028 – 19036
31.1404 Norris, Jim Gaddy	19037 – 19038
31.1405 Norris, Jim Gaddy, 1944	19039 – 19049
31.1406 Norris, Jim Gaddy, 1945	19050 – 19051
31.1407 Norris, Jim Gaddy, 1947	19052 – 19058
31.1408 Norris, Jim Gaddy, 1948	19059 – 19077
31.1409 Norris, Jim Gaddy, 1949	19078 – 19094
31.1410 Norris, Jim Gaddy, 1950	19095 – 19104
31.1411 Norris – Wallace Debate, 1944	19105 – 19115
31.1412 Northern Baptist Convention	19116 – 19119
31.1413 Northern Baptist Convention, 1947	19120 – 19121
31.1414 Northern Baptist Convention, 1949	19122 – 19124
31.1415 Northern Baptist Convention, 1950	19125 – 19126
31.1416 North, Jim, 1948	19127 – 19132
31.1417 Norwood, James, 1947	19133 – 19142
31.1418 Norwood, James, 1948	19143 – 19155
31.1419 Norwood, James, 1949	19156 – 19159
31.1420 Norwood, James, 1950	19160 – 19181
31.1421 Norwood, James, 1951	19182 – 19189
31.1422 Notes – Miscellaneous, 1949	19190 – 19224
31.1423 O – Miscellaneous	19225
31.1424 O – Miscellaneous, 1927	19226 – 19227
31.1425 O – Miscellaneous, 1931	19228 – 19232
31.1426 O – Miscellaneous, 1932	19233 – 19244
31.1427 O – Miscellaneous, 1933	19245 – 19252
31.1428 O – Miscellaneous, 1935	19253

### **Items**

31.1429 O – Miscellaneous, 1941	19254
31.1430 O – Miscellaneous, 1944	19255 – 19260
31.1431 O – Miscellaneous, 1947	19261 – 19268
31.1432 O – Miscellaneous, 1948	19269 – 19276
31.1433 O – Miscellaneous, 1949	19277 – 19283
31.1434 O – Miscellaneous, 1950	19284 – 19291

**Box 32**

32.1435 O – Miscellaneous, 1951  
 32.1436 O – Miscellaneous, 1952  
 32.1437 Oakley, Henry, 1943  
 32.1438 Odor, Humphrey, 1947  
 32.1439 Oldham, Earl, 1950  
 32.1440 Olley, George, 1947  
 32.1441 Olney, William, 1942  
 32.1442 Olney, William, 1945  
 32.1443 Orr, C. P., 1931  
 32.1444 Orr, C. P., 1933  
 32.1445 Orr, M. F., 1950  
 32.1446 Orr, Nina, 1948  
 32.1447 Ortiz, Manuel C., 1948  
 32.1448 Osborne, Luther B., 1944  
 32.1449 Outlaw, C. W., 1948  
 32.1450 Outlines, 1932  
 32.1451 Overturf, C. E., 1948  
 32.1452 Ownby, H. C., 1947  
 32.1453 Ownby, H. C., 1950  
 32.1454 Oxford University Press, 1936  
 32.1455 Oxford University Press, 1937  
 32.1456 Oxford University Press, 1938  
 32.1457 Oxford University Press, 1939  
 32.1458 P – Miscellaneous  
 32.1459 P – Miscellaneous, 1929  
 32.1460 P – Miscellaneous, 1930  
 32.1461 P – Miscellaneous, 1931  
 32.1462 P – Miscellaneous, 1932  
 32.1463 P – Miscellaneous, 1933  
 32.1464 P – Miscellaneous, 1934  
 32.1465 P – Miscellaneous, 1935  
 32.1466 P – Miscellaneous, 1940  
 32.1467 P – Miscellaneous, 1944  
 32.1468 P – Miscellaneous, 1945  
 32.1469 P – Miscellaneous, 1946  
 32.1470 P – Miscellaneous, 1947  
 32.1471 P – Miscellaneous, 1948  
 32.1472 P – Miscellaneous, 1949

**Items**

19292 – 19302  
 19303 – 1908  
 19309 – 19310  
 19311 – 19315  
 19316 – 19319  
 19320 – 19322  
 19323 – 19324  
 19325 – 19327  
 19328 – 19342  
 19343 – 19345  
 19346 – 19350  
 19351 – 19354  
 19355 – 19370  
 19371 – 19376  
 19377 – 19381  
 19382 – 19448  
 19449 – 19450  
 19451 – 19454  
 19455 – 19459  
 19460 – 19498  
 19499 – 19567  
 19568 – 19630  
 19631 – 19651  
 19652 – 19656  
 19657~19658  
 19659 – 19661  
 19662 – 19707  
 19708 – 19769  
 19770 – 19813  
 19814 – 19822  
 19823 – 19824  
 19825 – 19827  
 19828 – 19833  
 19834 – 19835  
 19836 – 19840  
 19841 – 19900  
 19901 – 19933  
 19934 – 19971

32.1473 P – Miscellaneous, 1950	19972 – 20004
32.1474 P – Miscellaneous, 1951	20005 – 20034
32.1475 P – Miscellaneous, 1952	20035 – 20047

**Box 33**

33.1476 Page, Kirby, 1932	20048 – 20082
33.1477 Palestine	20083
33.1478 Palestine Trip (1 of 3), 1947	20084 – 20150
33.1479 Palestine Trip (2 of 3), 1947	20151 – 20226
33.1480 Palestine Trip (3 of 3), (Travel Credentials), 1947	20227 – 20248
33.1481 Palestine Trip (British Consulate Gen.), 1947	20249 – 20262
33.1482 Palestine Trip (Worldwide Missionary Con.), 1947	20263 – 20277
33.1483 Palestine Trip, 1948	20278 – 20328
33.1484 Palestine (Appl – Laymen), 1949	20329 – 20359
33.1485 Palestine (Appl – Preachers), 1949	20360 – 20397
33.1486 Palestine Trip, 1949	20398 – 20481
33.1487 Palestine, 1950	20482 – 20582
33.1488 Palestine, 1951	20529 – 20560
33.1489 Palmer, Alfred, 1949	20561 – 20562
33.1490 Palmer, George A., 1948	20563 – 20566
33.1491 Palmer, George A., 1950	20567 – 20571
33.1492 Palmer, A. L., 1950	20572 – 20575
33.1493 Parker, E. G., 1948	20576 – 20580
33.1494 Parkins, J. M., 1932	20581 – 20591
33.1495 Parmley, Nell, 1950	20592 – 20610
33.1496 Parmley, Nell, 1951	20611 – 20619
33.1497 Parr, Bob, 1950	20620 – 20665
33.1498 Parr, Robert, 1951	20666 – 20698
33.1499 Parrish, Pink, 1932	20699 – 20702
33.1500 Paton, H. R., 1949	20703 – 20707
33.1501 Patterson, A. L., 1950	20708 – 20716
33.1502 Patterson, L. R. (Pat), 1948	20717 – 20720

**Items**

**Box 34**

34.1503 Pavey, Harry, 1950	20721 – 20742
34.1504 Pavey, Harry F., 1951	20743 – 20755
34.1505 Pawkett, U. S., 1931	20756 – 20779
34.1506 Peak, Elbert G., 1949	20780 – 20789
34.1507 Peak, Luther, 1932	20790
34.1508 Peak, Luther C., 1947	20791 – 20808
34.1509 Peak, Luther C., 1948	20809 – 20834
34.1510 Peak, Luther C., 1949	20835 – 20872
34.1511 Peak, Luther C., 1950	20873 – 20903

**Items**

34.1512 Peak, Luther C., 1951	20904 – 20931
34.1513 Peak, Luther C., 1952	20932 – 20972
34.1514 Pearson, Osborne A., 1951	20973 – 20977
34.1515 Penny, J. C., 1932	20978 – 20979
34.1516 Penny, J. C., 1938	20980 – 20983
34.1517 Penny, J. C., 1949	20984 – 20988
34.1518 Penny, J. C., 1950	20989 – 20993
34.1519 Penny, J. C., 1951	20994 – 20999
34.1520 Perkins, Jonathan, 1933	21000 – 21004
34.1521 Personal Debts, 1927	21005 – 21010
34.1522 Personal Debts (J.F.N.), 1947	21011 – 21053
34.1523 Personal Debts (J.F.N.), 1951	21054 – 21078
34.1524 Personal Loans (J.F.N.), 1934	21079 – 21085
34.1525 Personal Loans (J.F.N.), 1940	21086
34.1526 Personal Loans (J.F.N.), 1945	21087
34.1527 Personal Loans (J.F.N.), 1950	21088
34.1528 Politics – Misc., 1952	21089 – 21143
34.1529 Politics (Tam Connally), 1952	21144 – 21158
34.1530 Politics (Price Daniel), 1952	21159 – 21168
34.1531 Politics (Dwight Eisenhower), 1952	21169 – 21184
34.1532 Politics (Estes Kefauver), 1952	21185 – 21197
34.1533 Politics (H. J. Porter), 1952	21198 – 21205
34.1534 Politics (Harry Truman), 1952	21206 – 21211
34.1535 Pond, W. Y., 1931	21212 – 21217
34.1536 Pope, Floyd E. L., 1950	21218 – 21221
34.1537 Porter, Ford, 1931	21222 – 21227
34.1538 Porter, Ford, 1932	21228 – 21232
34.1539 Porter, Ford, 1949	21233 – 21235
34.1540 Potter, William, 1949	21236 – 21241
34.1541 Presidency (FBBS), 1948	21242 – 21261
34.1542 Price, G. Gordon, 1949	21262
34.1543 Price, Lloyd E., 1949	21263 – 21265
34.1544 Price, Lloyd E., 1950	21266 – 21275
34.1545 Prison (Goree State Farm), 1927	21276 – 21279
34.1546 Prison – Miscellaneous, 1949	21280 – 21386
34.1547 Prison – Anderson, Chap. B. C., 1949	21387 – 21394

**Box 35**

35.1548 Prison – Atkins, Glen D., 1949
35.1549 Prison – Evans, Ilene, 1949
35.1550 Prison – Huffman, Grady, 1949
35.1551 Prison – Phillips, Sen. Jimmy, 1949
35.1552 Prison – Qualls, Guy Floyd, 1949
35.1553 Prison – Sanders Ruel, 1949
35.1554 Prison – Whittaker Carl, 1949
35.1555 Prison – Wright, Jeffy Newton, 1949

**Items**

21395 – 21405
21406 – 21410
21411 – 21415
21416 – 21419
21420 – 21424
21425 – 21428
21429 – 21433
21434 – 21440



35.1556 Prison, 1950	21441 – 21455
35.1557 Prohibition (Anti-Saloon League), 1932 – 1934	21455
35.1558 Prohibition Clippings, 1932 – 1934	21456 – 21471
35.1559 Prohibition Comm, 1932 – 34	21472 – 21481
35.1560 Prohibition Corresp, 1932 – 1934	21182 – 21512
35.1561 Prohibition (Dept Justice), 1932 – 34	21513 – 21518
35.1562 Prohibition (Daniel Poling), 1932 –34	21519 – 21526
35.1563 Prohibition Propagandam 1932 – 34	21527 – 21576
35.1564 Prohibition Skitm 1932 – 34	21577
35.1565 Provisional Govt of Israel, 1948	21578 – 21580
35.1566 Pryde, Robert, 1931	21581 – 21611
35.1567 Purcer, W. L., 1950	21612 – 21616
35.1568 Purdue, Cynthia, 1952	21617 – 21624
35.1569 Q –Miscellaneous, 1947	21626 – 21628
35.1570 Q –Miscellaneous, 1948	21629 – 21631
35.1571 Q –Miscellaneous, 1949	21632
35.1572 Q –Miscellaneous, 1950	21633
35.1573 Q –Miscellaneous, 1951	21634 – 21638
35.1574 Q –Miscellaneous, 1952	21639 – 21640
35.1575 Quinn, Ed C., 1949	(no numbers)
35.1576 Quinn, E. C., 1950	(no numbers)
35.1577 Quinn, Ed, 1951	(no numbers)
35.1578 Quinn, E. C., 1948	21641 – 21658
35.1579 R – Miscellaneous	21659
35.1580 R – Miscellaneous, 1932	21664 – 21669
35.1582 R – Miscellaneous, 1933	21670
35.1583 R – Miscellaneous, 1934	21671 – 21676
35.1584 R – Miscellaneous, 1939	21677
35.1585 R – Miscellaneous, 1940	21678
35.1586 R – Miscellaneous, 1941	21679
35.1587 R – Miscellaneous, 1943	21680 – 21681
35.1588 R – Miscellaneous, 1944	21682 – 21687
35.1589 R – Miscellaneous, 1947	21688 – 21745
35.1590 R – Miscellaneous, 1948	21746 – 21784
35.1591 R – Miscellaneous, 1949	21785 – 21834
35.1592 R – Miscellaneous, 1950	21835 – 21885
35.1593 R – Miscellaneous, 1951	21886 – 21935
35.1594 R – Miscellaneous, 1952	21936 – 21956
35.1595 Race Problems, 1948	21957 – 21964
35.1596 Radabaugh, E. B., 1949	21965 – 21977

**Box 36**

36.1597 Radabaugh, E. B., 1950
36.1598 Radio –Miscellaneous, 1946
36.1599 Radio – F.C.C., 1946

**Items**

21978 – 21991
21992 – 21998
21999 – 22005

36.1600 Radio KFJZ – Cagle, Gene L., 1946	22006 – 22008
36.1601 Radio KFJZ – Fitts, WM. C. (Legal Action Against), 1946	22009 – 22046
36.1602 Radio KFJZ (Tarrant County Broadcasting Co) File 1, 1946	22047 – 22077
36.1603 Radio KFJZ (Tarrant County Broadcasting Co.)File 2, 1946	22078 – 22095
36.1604 Radio – Miscellaneous, 1947	22096 – 22111
36.1605 Radio – Fitts, Wm. C., 1947	22112 – 22118
36.1606 Radio – Miscellaneous, 1948	22119 – 22123
36.1607 Radio – Cagle, Gene L., 1948	22124 – 22133
36.1608 Radio – Fitts. Wm. C., 1948	22134 – 22158
36.1609 Radio – Weldon & Carr, 1948	22159 – 22160
36.1610 Radio, 1949	22162 – 22187
36.1611 Radio –Miscellaneous, 1950	22188 – 22201
36.1612 Radio –Miscellaneous, 1951	22202
36.1613 Radio –Miscellaneous, 1952	22203 – 22209
36.1614 Ragland, J. O., 1949	22210 – 22216
36.1615 Rankin, John, 1947	22217 – 22219
36.1616 Ransam, H. B. Motor Co., 1946	22220 – 22223
36.1617 Ransam, H. B. Motor Co., 1950	22224 – 22227
36.1618 Ransam, H. B. Motor Co., 1951	22228 – 22241
36.1619 Rassman, A. E., 1950	22242 – 22244
36.1620 Rawlings, John, 1949	22245 – 22251
36.1621 Rawlings, John, 1950	22252 – 22264
36.1622 Rayburn, Sam, 1947	22265 – 22277
36.1623 Rayburn, Sam, 1948	22278 – 22300
36.1624 Rayburn, Sam, 1949	22301 – 22307
36.1625 Rayburn, Sam, 1950	22308 – 22313
36.1626 Rayburn, Sam, 1951	22314 – 22329
36.1627 Reports (Workers), 1947	22330 – 22338
36.1628 Reports, 1948	22339
36.1629 Reports (Memos), 1949	22340 – 22344
36.1630 Reuter, William, 1950	22345 – 22353
36.1631 Reuter, William., 1951	22354 – 22363
36.1632 Revelation (taught by J.F.N.), 1944	22364 – 22376
36.1633 Rexrode, Milto, 1948	22377 – 22382
36.1634 Richardson, Sid, 1951	22383 – 22386
36.1635 Rickey, Branch, 1949	22387 – 22388
36.1636 Ridpath's History of the World, 1948	22389 – 22401
36.1637 Riley, W. B., 1931	22402 – 22468
36.1638 Riley, W. B., 1932	22469 – 22489
36.1639 Riley, W. B., 1933	22490 – 22501
36.1640 Ritchie, Hamer G., 1947	22502 – 22503
36.1641 Ritchie, Hamer G., 1950	22504 – 22513
36.1642 Ritchie, Hamer G., 1951	22514 – 22516

36.1643 Ritchie, Hamer, 1952	22517 – 22521
36.1644 Ritchie, Omer, 1947	22522 – 22523
36.1645 Ritchie, Omer H., 1951	22524 – 22530

**Box 37**

37.1646 Roberts, Louis, 1943  
 37.1647 Roberts, Oral, 1949  
 37.1648 Robinson, Wilbur, 1947  
 37.1649 Robinson, Wilbur, 1948  
 37.1650 Roblin, Frank, 1948  
 37.1651 Rodgers, Lavern F., 1950  
 37.1652 Roger, Wms Club H. A. Hitt, 1927  
 37.1653 Rollings, E. T., 1949  
 37.1654 Rollings, E. J., 1950  
 37.1655 Roams –Dormitory, 1950  
 37.1656 Rosenfield, John, 1950  
 37.1657 Ross, John A., 1949  
 37.1658 Ross, M. L., 1949  
 37.1659 S – Miscellaneous, 1927  
 37.1660 S – Miscellaneous, 1928  
 37.1661 S – Miscellaneous, 1929  
 37.1662 S – Miscellaneous, 1930  
 37.1663 S – Miscellaneous, 1931  
 37.1664 S – Miscellaneous, 1932  
 37.1665 S – Miscellaneous, 1933  
 37.1666 S – Miscellaneous, 1934  
 37.1667 S – Miscellaneous, 1935  
 37.1668 S – Miscellaneous, 1937  
 37.1669 S – Miscellaneous, 1939  
 37.1670 S – Miscellaneous, 1940  
 37.1671 S – Miscellaneous, 1944  
 37.1672 S – Miscellaneous, 1945  
 37.1673 S – Miscellaneous, 1946  
 37.1674 S – Miscellaneous, 1947  
 37.1675 S – Miscellaneous, 1948  
 37.1676 S – Miscellaneous, 1949  
 37.1677 S – Miscellaneous, 1950  
 37.1678 S – Miscellaneous, 1951  
 37.1679 S – Miscellaneous, 1952  
 37.1680 Sadler, M.E. (T.C.U.)  
 37.1681 Savage, H. H., 1934  
 37.1682 Savage, Henry, 1949  
 37.1683 Scarborough, L. R., 1927  
 37.1684 Scarborough, L. R., 1928  
 37.1685 Schepis, Mike, 1948  
 37.1686 Schepis, Mike, 1951

**Items**

22531 – 22549  
 22550 – 22553  
 22554 – 22562  
 22563 – 22569  
 22570 – 22571  
 22572 – 22575  
 22576 – 22598  
 22599 – 22602  
 22603 – 22612  
 22613 – 22623  
 22624 – 22627  
 22628 – 22634  
 22635 – 22639  
 22640  
 22641  
 22642  
 22643 – 22650  
 22651 – 22653  
 22654 – 22655  
 22656 – 22665  
 22666 – 22681  
 22682 – 22686  
 22687  
 22688 – 22691  
 22692 – 22694  
 22695 – 22705  
 22706 – 22721  
 22722 – 22723  
 22724 – 22814  
 22815 – 22893  
 22894 – 22971  
 22972 – 23032  
 23033 – 23079  
 23080 – 23087  
 23088 – 23089  
 23090 – 23094  
 23095 – 23101  
 23102 – 23105  
 23106 – 23111  
 23112 – 23118  
 23119 – 23125

37.168. Schuler, Bob, 1951	23126 – 2313
37.1688 Schuler, Jack, 1951	23131 – 23135
37.1689 Scorggie, Graham, 1942	23136 – 23137
37.1690 Scott, J. Harvey, 1947	23138 – 23150
37.1691 Scott, J. Harvey, 1948	23151 – 23160
37.1692 Scott, J. Harvey, 1949	23161 – 23172
37.1693 Scott, J. Harley, 1950	23173 – 23176
37.1694 Searchlight Co., 1933	23177 – 23178
37.1695 Sears, Howard, 1949	23179 – 23182
37.1696 Segler, Connie, 1948	23183 – 23187
37.1697 Sellers, Dean L, 1947	23188 – 23194

**Box 38**

38.1698 Seminary Bible BookHouse, 1947
38.1699 Seminary Bible BookHouse, 1948
38.1700 Seminary Book Store, 1949
38.1701 Seminary Bible and Book Store, 1950
38.1702 Seminary Bible and Book Store, 1951
38.1703 Shewmaker, O. F., 1948
38.1704 Shields, T. T., 1947
38.1705 Shields, T.T., 1948
38.1706 Shields, T. T, 1950
38.1708 Shields, T. T., 1951
38.1709 Shields, T. T., 1952
38.1710 Shivers, Gov. Allen, 1949
38.1711 Shivers, Gov. Allen, 1950
38.1712 Shivers, Gov. Allen, 1951
38.1713 Shuler, A. C., 1947
38.1714 Simmons, Cecil, 1949
38.1715 Simmons, Cecil, 1950
38.1716 Simmons, Cecil, 1951
38.1717 Simmons, Cecil, 1952
38.1718 Skillern, Ray, 1949
38.1719 Slade, H. C., 1949
38.1720 Sligar, James N., 1949
38.1721 Smith, Al.
38.1722 Smith, Gerald L. K., 1947
38.1723 Smith, Gerald L. K., 1948
38.1724 Smith, J. Harold, 1949
38.1725 Smith, Lon A., 1932
38.1726 Smith, Noel, 1947
38.1727 Smith, Noel, 1948
38.1728 Smith, Noel, 1950
38.1729 Snow, I. Noel, 1949
38.1730 Snuggs, E. T. and Faith, 1934
38.1731 Snuggs, E. T. and Faith, 1935

**Items**

23195 – 23247
23248 – 23253
23254 – 23270
23271 – 23273
23274 – 23275
23276 – 23281
23282 – 23283
23284 – 23294
23361 – 23363
23364 – 23370
23371 – 23382
23383 – 23385
23386 – 23395
23396 – 23399
23400 – 23403
23404 – 23410
23411 – 23431
23432 – 23440
23441 – 23444
23445 – 23448
23449 – 23452
23453 – 23456
23457
23458 – 23498
23499 – 23511
23512 – 23516
23517 – 23524
23525 – 23557
23558 – 23574
23575 – 23588
23589 – 23591
23592
23593

38.1732 Snuggs, E. T. and Faith, 1938	23594 – 23604
38.1733 Snuggs, E. T. and Faith, 1939	23605 – 236123
38.1734 Speech (J.F.N.), 1913	23613 – 23616
38.1735 Solicitations, 1950	23617 – 23643
38.1736 Southern Baptist Convention	23644 – 23646
38.1737 Southern Baptist Convention (Misappropriates), 1930	23647
38.1738 Southern Baptist Convention, 1931	23648 – 23651
38.1739 Southern Baptist Convention, 1945	23652
38.1740 Southern Baptist Convention, 1947	23653 – 23659
38.1741 Southern Baptist Convention, 1948	23660 – 23718

**Box 39**

39.1742 Southern Baptist Convention, 1949
39.1743 Southern Baptist Convention, 1950
39.1744 Sparks, J. F. 1947
39.1745 Sparks, J.F., 1948
39.1746 Sparks, John F., 1949
39.1747 Spellman, Cardinal Francis, 1947
39.1748 Spellman, Cardinal Francis, 1948
39.1749 Springer, Harvey, 1947
39.1750 Springer, Harvey, 1949
39.1751 Springer, Harvey, 1950
39.1751 Springer, Harvey H., 1951
39.1752 Springer, Harvey H., 1952
39.1753 Starnes, C. R., 1947
39.1754 Starnes, C. R., 1948
39.1755 Starnes, C. R., 1949
39.1756 State Department, 1947
39.1757 Statler Hotel, 1947
39.1758 Staton, R. G., 1947
39.1759 Stealey, Dr. C. P., 1933
39.1760 Stealey, Dr. C. P., 1934
39.1761 Stealey, Dr. C. P., 1935
39.1762 Stealey, Dr. C. P., 1936
39.1763 Stealey, Dr. C. P., 1937
39.1764 Stevenson, Coke, 1948
39.1765 Stephenson, Jean, 1950
39.1766 Stogner, W. W., 1948
39.1767 Student Clergy Applications, 1947
39.1768 Stump, O. E., 1949
39.1769 Sudduth, Ferman R, 1949
39.1770 Sumrall, T. D., 1936
39.1771 Summers, R. T., 1950
39.1772 Sunday, Billy (Homer Rodeheaver), 1948

**Items**

23719 – 23733
23734 – 23758
23759 – 23764
23765 – 23769
23770 – 23772
23773 – 23781
23782 – 23787
23788 – 23801
23802 – 23812
23813 – 23831
23832 – 23899
23900 – 23949
23950 – 23957
23958 – 23963
23964 – 23970
23971 – 23975
23976 – 23985
23986 – 23989
23990 – 23995
23996 – 24028
24029 – 24058
24059 – 24072
24073 – 24091
24092 – 24102
24103 – 24109
24110 – 24115
24116 – 24135
24136 – 24139
24140 – 24143
24144 – 24152
24153 – 24159
24160 – 24161

39.1773 Swain, Sam, 1934	24162 – 24167
39.1774 Swan, Franklin, 1950	24168 – 24172
39.1775 Swank, W. Fred, 1948	24173 – 24176
39.1776 Sweet, W. S., 1947	24177 – 24178
39.1777 T – Miscellaneous,	24179
39.1778 T – Miscellaneous, 1927	24180 – 24183
39.1779 T – Miscellaneous, 1929	24184
39.1780 T – Miscellaneous, 1930	24185 – 24191
39.1781 T – Miscellaneous, 1931	24192 – 24226
39.1782 T – Miscellaneous, 1932	24227 – 24284
39.1783 T – Miscellaneous, 1933	24285 – 24303

**Box 40**

40.1784 T – Miscellaneous, 1934	24304 – 24308
40.1785 T – Miscellaneous, 1939	24309 – 24310
40.1786 T – Miscellaneous 1940	24311 – 24315
40.1787 T – Miscellaneous, 1943	24316
40.1788 T – Miscellaneous, 1944	24317 – 24325
40.1789 T – Miscellaneous, 1945	24326 – 24374
40.1790 T – Miscellaneous, 1947	24375 – 24412
40.1791 T – Miscellaneous, 1948	24413 – 24453
40.1792 T – Miscellaneous, 1949	24454 – 24487
40.1793 T – Miscellaneous, 1950	24488 – 245053
40.1794 T – Miscellaneous, 1951	24506 – 24531
40.1795 T – Miscellaneous, 1952	24532 – 24541
40.1796 Taggart, Tan, 1951	24542 – 24545
40.1797 Talrnadge, Hennan, 1947	24546 – 24554
40.1798 Talmadge, Hennan, 1948	24555 – 24560
40.1799 Tarmlany Hall (Pat Harrison), 1928	24561 – 24568
40.1800 Tarmlany Hall (Rev.Ralph J. Haughton), 1928	24569
40.1801 Tate, Dorothy, 1933	24570 – 24573
40.1802 Tatum, Ray, 1949	24574 – 24578
40.1803 Tatum, Ray, 1950	24579 – 24582
40.1804 Tatum, Ray, 1951	24583 – 24592
40.1805 Tatum, Scott, 1945	24593 – 24597
40.1806 Taylor, Claude and Horace, 1948	24598 – 24606
40.1807 Taylor, Mrs. John S., 1947	24607 – 24611
40.1808 Taylor, Myron C., 1947	24612 – 24615
40.1809 Teague, J. A., 1948	24616 – 24619
40.1810 Teal, Rev. Frank, 1949	24620 – 24622
40.1811 Teal, Frank, 1951	24623 – 24628
40.1812 Telegrams, 1947	24629 – 24642
40.1813 Telegrams, 1952	24643 – 24661
40.1814 Temple Baptist Church (Detroit), 1945	24662 – 24671
40.1815 Temple Baptist Church, 1947	24672 – 24693

40.1816 Temple Baptist Church, 1950	24694 – 24704
40.1817 Temple Workers, 1949	24705 – 24715
40.1818 Tennison, W. R., 1931	24716 – 24721
40.1819 Tests on Romans VIII (Graded by J.F.N.), 1949	24722 – 24745
40.1820 Texas Christian University, 1932	24746 – 24749
40.1821 Texas Prison System, 1948	24750 – 24756
40.1822 Texas Tech, 1932	24757 – 24796
40.1823 Thacker, Ike R.	24797
40.1824 Thomas, Cullen F., 1932	24798 – 24802
40.1825 Thomas, J. Parnell, 1947	24803 – 24805
40.1826 Thomas, Sebe J., 1931	24806 – 24811
40.1827 Thompson, Claire, 1945	24812 – 24821
40.1828 Thompson, Ernest, 1931	24822 – 24827
40.1829 Thompson, Ernest O., 1932	24828 – 24833
40.1830 Thompson, K. O., 1931	24834 – 24837

**Box 41**

**Items**

41.1831 Thorgrimsen, R. S., 1948	24838 – 24841
41.1832 Thurman, Kyle (Norris Rines Debate), 1952	24842 – 24843
41.1833 Tidwell, J. B., 1933	24844
41.1834 Time Magazine Suit, 1948	24845 – 24891
41.1835 Titus, Louis, 1931	24892 – 24910
41.1836 Titus, Louis, 1932	24911 – 24914
41.1837 Toney, Ralph, 1947	24915 – 24918
41.1838 Toney, Ralph, 1948	24919 – 24924
41.1839 Tower Press, 1932	24925 – 24929
41.1840 Trip (preparations), 1951	24930 – 24981
41.1841 Troup, Jock, 1947	24982 – 24987
41.1842 Troup, Jock, 1948	24988 – 24997
41.1843 Troup, Jock, 1949	24998 – 25030
41.1844 Troup, Jock, 1950	25031 – 25081
41.1845 Troup, Jock, 1951	25082 – 25116
41.1846 Troup, John George W., 1949	25117 – 25118
41.1847 Tour, 1952	25119 – 25180
41.1848 Tour (News Report to Fundamentalist), 1952	25181 – 25210
41.1849 Truett, George, 1931	25211 – 25218
41.1850 Truett, George W., 1932	25219 – 25220
41.1851 Truman, Harry S., 1947	25221 – 25235
41.1852 Truman, Harry S., 1948	25236 – 25266
41.1853 Truman, Harry S., 1949	25267 – 25270
41.1854 Truman, Harry S., 1950	25271 – 25279
41.1855 Tuck, Orville M., 1949	25280 – 25282
41.1856 Tulga, Chester, 1950	25283 – 25285

41.1857 Turner, Harvey, 1947	25286 – 25292
41.1858 U – Miscellaneous, 1934	25293 – 25294
41.1859 U – Miscellaneous, 1939	25295 – 25296
41.1860 U – Miscellaneous, 1945	25297 – 25303
41.1861 U – Miscellaneous, 1947	25304 – 25308
41.1862 U – Miscellaneous, 1949	25309 – 25315
41.1863 U – Miscellaneous, 1950	25316 – 25318
41.1864 U – Miscellaneous, 1951	25319 – 25320
41.1865 Ufford, A. F., 1949	25321 – 25326
41.1866 Underwood, Keystone, 1932	25327 – 25238
41.1867 Upshaw, William D., 1948	25329 – 25332
41.1868 V – Miscellaneous, 1927	25333
41.1869 V – Miscellaneous, 1932	25334
41.1870 V – Miscellaneous, 1934	25335 – 25338
41.1871 V – Miscellaneous, 1935	25339
41.1872 V – Miscellaneous, 1940	25340 – 25341
41.1873 V – Miscellaneous, 1942	25342 – 25343
41.1874 V – Miscellaneous, 1943	25344
41.1875 V – Miscellaneous, 1944	25345 – 25346
41.1876 V – Miscellaneous, 1945	25347 – 25357
41.1877 V – Miscellaneous, 1946	25358 – 25359
41.1878 V – Miscellaneous, 1947	25360 – 25371
41.1879 V – Miscellaneous, 1948	25372 – 25379
41.1880 V – Miscellaneous, 1949	25380 – 25391
41.1881 V – Miscellaneous, 1950	25392 – 25394
41.1882 V – Miscellaneous, 1951	25395 – 25403
41.1883 V – Miscellaneous, 1952	25404 – 25407

**Box 42**

42.1884 Vance, T. L., 1945	<b>Items</b> 25408 – 25410
42.1885 Vandenberg, Arthur H., 1947	25411 – 25415
42.1886 Vanderzee, A., 1945	25416 – 25420
42.1887 Vanderzee, A., 1947	25421 – 25445
42.1888 Vanderzee, A., 1948	25446 – 25461
42.1889 Vanderzee, A., 1949	25462 – 25472
42.1890 Vanderzee, A., 1950	25473 – 25486
42.1891 Vanderzee, A., 1951	25487 – 25501
42.1892 Vanderzee, A., 1952	25502 – 25505
42.1893 Vatican Visit (J.F.N.), 1947	25506 – 25533
42.1894 Vatican Visit, 1948	25534 – 25535
42.1895 Veale, Harold G., 1945	25536 – 25539
42.1896 Vess, Loys, 1945	25540 – 25548
42.1897 Vess, Loys, 1947	25549 – 25553
42.1898 Vess, Loys, 1948	25554 – 25558
42.1899 Vess, Loys, 1950	25559 – 25578



42.1900 Veteran's Administration, 1948	25579 – 25593
42.1901 Veteran's Administration, 1949	25594 – 25612
42.1902 Veteran's Administration, 1950	25613 – 25616
42.1903 Vick, G. B., 1944	25617 – 25627
42.1904 Vick, G. B., 1945	25628 – 25780
42.1905 Vick, G. B., 1946	25781
42.1906 Vick, G. B., 1947	25782 – 25917
42.1907 Vick, G. B., June – Dec., 1947	25918 – 26012
42.1908 Vick, Beauchamp, 1948	26013 – 26035
42.1909 Vick, G. B., 1949	26036 – 26178
42.1910 Vick, G. B., Jan. – June, 1950	26179 – 26283

**Box 43**

43.1911 Vick, G. B. June – Dec., 1950
43.1912 Vick, G. B., 1951
43.1913 Vick, G. B., 1952
43.1914 Vick, Eloise, 1949
43.1915 Victory Center, 1951
43.1916 Vollmer, W. G., 1947
43.1917 Vollmer, W. G., 1949
43.1918 Vollmer, W. G., 1950
43.1919 Vollmer, W. G., 1951
43.1920 Voyles, Clarence A., 1948
43.1921 W – Miscellaneous, 1927
43.1922 W – Miscellaneous, 1928
43.1923 W – Miscellaneous, 1930
43.1924 W – Miscellaneous, 1932
43.1925 W – Miscellaneous, 1932
43.1926 W – Miscellaneous, 1934
43.1927 W – Miscellaneous, 1935
43.1928 W – Miscellaneous, 1936
43.1929 W – Miscellaneous, 1938
43.1930 W – Miscellaneous, 1939
43.1931 W – Miscellaneous, 1940
43.1932 W – Miscellaneous, 1941
43.1933 W – Miscellaneous, 1944
43.1934 W – Miscellaneous, 1945
43.1935 W – Miscellaneous, 1947
43.1936 W – Miscellaneous, 1948
43.1937 W – Miscellaneous, 1949
43.1938 W – Miscellaneous, 1950
43.1939 W – Miscellaneous, 1951
43.1940 W – Miscellaneous, 1952
43.1941 Waco Hospital, 1933
43.1942 Waco Hospital, 1934
43.1943 Walmoth, William, 1941

**Items**

26284 – 26358
26359 – 26382
26383 – 26384
26385 – 26387
26388 – 26391
26392 – 26400
26401 – 26411
26412 – 26419
26420 – 26425
26426 – 26436
26437 – 26438
26439
264403
26441 – 26445
26446 – 26447
26448 – 26455
26456 – 26459
26460 – 26462
26463 – 26464
26465 – 26467
26468 – 26482
26483 – 26487
26488 – 26496
26497 – 26589
26590 – 26663
26464 – 26746
26747 – 26824
26825 – 26858
26859 – 26903
26904 – 26920
26921 – 29636
26937 – 26974
26975 – 26978

43.1944 Waltham, William, 1947	26979 – 26985
43.1945 Waltham, William, 1951	26986 – 26992
43.1946 Waller, Clarence C., 1949	26993 – 26997

**Box 44**

**Items**

44.1947 War – Hydrogen Bomb, 1950	26998 – 27001
44.1948 War Production Board (Dormitory), 1945	27002 – 27010
44.1949 Watson, J. B., 1945	27011 – 27017
44.1950 Watkins, Maylon D., 1945	27018 – 27022
44.1951 Watkins, Maylon D., 1947	27023 – 27029
44.1952 Watkins, Maylon D., 1948	27030 – 27042
44.1953 Watkins, Maylon D., 1949	27043 – 27050
44.1954 Watkins, Maylon D., 1950	27051 – 27055
44.1955 Watkins, Maylon D., 1951	27056 – 27065
44.1956 Weatherby, J. H., 1945	27066 – 27071
44.1957 Weaver, Mrs. Charles (Lillian Norris), 1939	27072
44.1958 Weaver, Mrs. Charles, 1945	27073 – 27091
44.1959 Weaver, Mrs. Charles (Lillian Norris), 1947	27092 – 27100
44.1960 Weaver, Mr. & Mrs. Charles (Lillian Norris), 1948	27101 – 27121
44.1961 Weaver, C. B., 1949	27122 – 27131
44.1962 Weaver, Mrs. Charles (Lillian Norris), 1951	271321
44.1963 Weedon, Frank, 1947	27137
44.1964 Welch, C. E., 1934	27138 – 27143
44.1965 Wells, Norman, 1949	27144 – 27148
44.1966 Wells, Oscar, 1945	27149 – 27153
44.1967 Wells, Oscar, 1947	27154 – 27167
44.1968 West, J. F., 1947	27168 – 27174
44.1969 West, J. F., 1948	27175 – 27178
44.1970 Wheeler, Norfleet (The Wyoming Witness), 1947	27179 – 27184
44.1971 Whisnant, Everett, 1945	27185 – 27189
44.1972 White Motor Co., 1948	27190 – 27204
44.1973 White, R. E., 1938	27205 – 27211
44.1974 White, Walter, 1951	27212 – 27214
44.1975 Whole Bible Study Course, 1929	27215
44.1976 Who's Who, 1934	27216 – 27220
44.1977 Who's Who, 1947	27221 – 27223
44.1978 Wilcox, Herman L., 1947	27224 – 27230
44.1979 Williams, Earl, 1947	27231 – 27237
44.1980 Williams, E. R., 1951	27238 – 27241
44.1981 Willis, Doyle, 1949	27242 – 27256

44.1982 Wilkie, Wendell L., 1941	27257
44.1983 Wilmot, John, 1947	27258 – 27261
44.1984 Wilson, Art, 1947	27262 – 27274
44.1985 Wilson, Art, 1948	27275 – 27285
44.1986 Wilson, Art, 1950	27286 – 27290
44.1987 Wilson, Charles E., 1945	27291 – 27294
44.1988 Wilson, C. E., 1951	27295
44.1989 Wilson, Gilbert, 1939	27296 – 27320
44.1990 Wilson, T. G., 1949	27321 – 27323
44.1991 Wilson, William	27324 – 27325
44.1992 Winters, Merle, 1951	27326 – 27329
44.1993 Winthrow, Pat B., 1949	27330 – 27332
44.1994 Wolfe, M. H., 1940	27333 – 27390
44.1995 Wolfe, M. H., 1941	27391 – 27405
44.1996 Wolfe, M. H., 1945	27406 – 27409
44.1997 Woodworth, Reginald, 1945	27410 – 27413
44.1998 Woodworth, R. O., 1947	27414 – 27422
44.1999 Woodworth, Reginald, 1948	27423 – 27436
44.2000 Woodworth, Reginald, 1950	27437 – 27455
44.2001 Woodworth, R. O., 1951	27456 – 27463
44.2002 Workman, Claud L., 1949	27464 – 27468
44.2003 WFBMF, 1940	27469
44.2004 World Fundamentalist Bapt. Fellowship, 1950	27470 – 27474
44.2005 W.F.B.M.F., 1946	27475 – 27476
44.2006 W.F.B.M.F., 1948	27477 – 27531
44.2007 W.F.B.M.F., 1949	27532 – 27533
44.2008 World Fundamental Baptist Missionary Fellowship, 1949	27534 – 27545
44.2009. W.F.B.M.F, 1950	27546 – 27571
44.2010 World War II	27572 – 27574

**Box 45**

45.2011 Wright, Grant Smith, 1951	27575 – 27582
45.2012 Wunneburger, Louis, 1940	27583 – 27601
45.2013 Wunneburger, Louis, 1941	27602 – 27608
45.2014 XYZ – Misc., 1934	27609 – 27610
45.2015 XYZ – Misc., 1935	27611
45.2016 XYZ – Misc., 1944	27612
45.2017 Y – Misc., 1945	27613 – 27621
45.2018 Z – Misc., 1945	27622 – 27623
45.2019 XYZ – Misc., 1947	27624 – 27634
45.2020 XYZ – Misc., 1948	27635 – 27646
45.2021 XYZ – Misc., 1949	27647 – 27650
45.2022 Y – Misc., 1950	27651 – 27655
45.2023 Z – Misc. 1950	27656 – 27657

**Items**

45.2024 XYZ – Misc., 1951	27658 – 27661
45.2025 XYZ – Misc., 1952	27662 – 27663
45.2026 XEPN	27664 – 27666
45.2027 Yarber, Traney, 1950	27667 – 27670
45.2028 Yopp, Troy B., 1945	27671 – 27674
45.2029 Youth for Christ	27675
45.2030 Zinneman, Wendell, 1947	27676 – 27690
45.2031 Zinneman, Wendell, 1948	27691 – 27714
45.2032 Zinneman, Wendell, 1949	27715 – 27721
45.2033 Zinneman, Wendell, 1950	27722 – 27749
45.2034 Zondervan Publishing House, 1949	27750 – 2775
45.2035 Clippings and Poems	27754 – 27803
45.2036 Clippings.	27804 – 27886
45.2037 Clippings and Misc.	27887 – 27930

**Box 46**

46.2038 Clippings and Misc.	<b>Items</b> 27931 – 27950
46.2039 Miscellaneous	27951 – 27976
46.2040 Miscellaneous	27977 – 28026
46.2041 Miscellaneous	28027 – 28084
46.2042 Miscellaneous	28085 – 28119
46.2043 Miscellaneous	28120 – 28172
46.2044 Miscellaneous	28173 – 28213
46.2045 Miscellaneous	28214 – 28265